



MagnumStone[®]

RETAINING WALLS

TITAN 30/11 METALIZED

TUBING

PERFORATED DRAIN
PIPE IN UNITS

PIPE OUTLET

IMPERVIOUS
MATERIAL AT TOE OF WALL

PLANTING SOIL

FOUNDATION

PLANTING

SOIL
FILTER

CLEAR CRUSHED DRAIN ROCK

MAGNUMSTONE

COMPACTED IMPERVIOUS
MATERIALS

FOUNDATION SOIL

DESIGN LOAD (KIPS)	fc(28 days) (psi)			
29.7	4,000	1.2		
25.0	4,000	1.058		
20.0	4,000	0.847		3" SCH 40
15.0	4,000	0.635	2.38 X 2.38 X 0.188	3" SCH 40
10.0	4,000	0.423	2.25 X 2.25 X 0.188	2.5" SCH 40
5.0	4,000	0.212	2.0 X 2.0 X 0.188	2.0" SCH 40

TECHNICAL REFERENCE MANUAL



- 3D Drawings
- Unit Specifications
- Cross Sections
- Design Charts
- Details

STEEL GRID

EXCAVATION
CUT LINE

PERFORATED DRAIN PIPE

PLAN VIEW



WELCOME

Our MagnumStone™ product is a large block, hollow core, wet-cast segmental retaining wall system that uses nearly half the amount of concrete per face foot when compared to traditional solid systems. The environmental and economical advantages of the pre-cast hollow block MagnumStone™ product are unprecedented in the retaining wall industry. Because of its size and design flexibility, MagnumStone™ is ideal for almost any retaining wall project from residential to large commercial installations.

Unit to unit connection uses our patented, mortarless, SecureLug™ interlock system (no expensive, time consuming pins or clips.) and are light enough that they can be moved two at a time with lighter machinery such as a standard Bobcat.

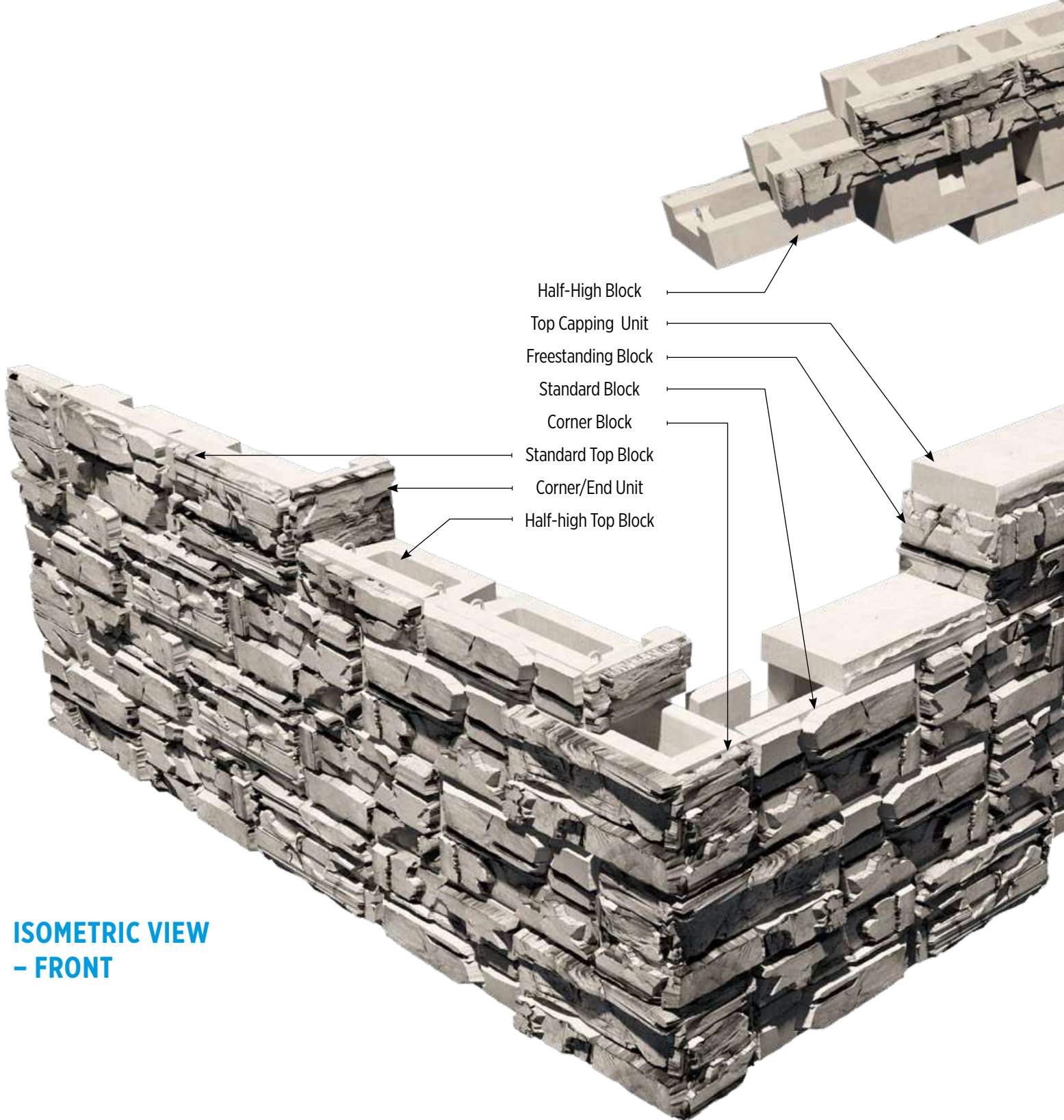
A wet cast segmental retaining wall product provides freeze/thaw durability advantages over competing products, a critical factor for the Departments Of Transport work that MagnumStone™ is very well suited for. The wet-cast process also allows for unique through-wall applications, face options and logo details for any type of project.

TECHNICAL REFERENCE INDEX



MagnumStone System	2
MagnumStone Blocks	4
Standard Block	6
Standard Base Block	7
Standard Top Block	8
Half-High Block	9
Half-High Base Block	10
Half-High Top Block	11
Half-Wide Block	12
Half-Wide Base Block	13
Half-Wide Top Block	14
Corner Block	15
Base Corner Block	16
Top Corner Block	17
Freestanding Blocks	18
Corner/End Units	20
Step/Top Cap Unit	22
Extender Units	23
Gravity Wall Cross Section & Details	24
Gravity Wall Charts	25
Plantable Wall Cross Section & Details	28
25° Setback Plantable Wall Charts	29
18° Setback Plantable Wall Charts	30
39° Setback Plantable Wall Charts	31
Geogrid Wall Cross Section & Detail	32
Postive Connection Wall Cross Section & Detail	33
Cantilevered Wall	34
Soil Nailing	35
Water Application/Drainage	36
Fence / Post Options	37
Freestanding Parapet Wall	38
Top of Wall Barrier Options	39

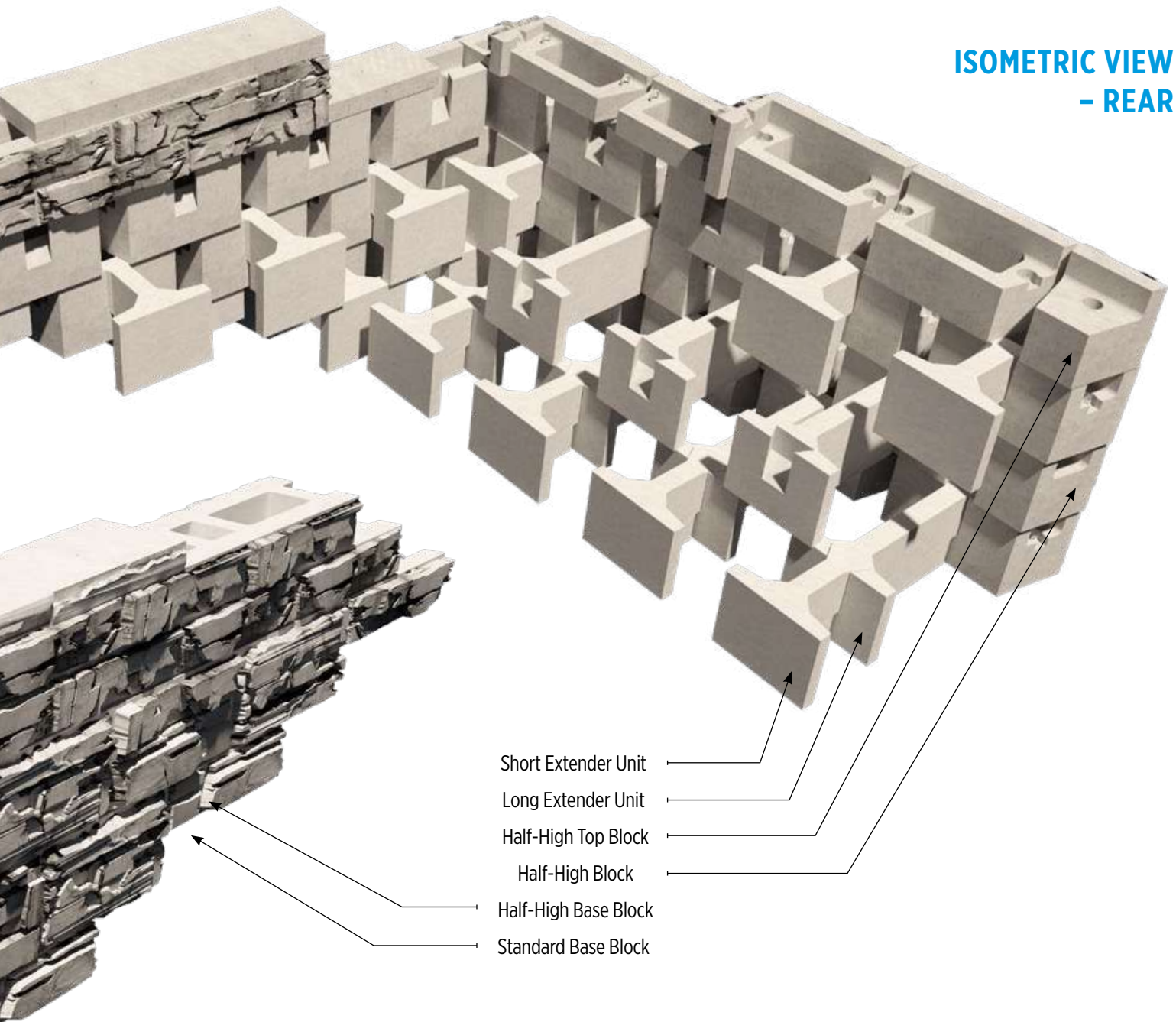
THE MAGNUMSTONE™ SYSTEM



- Half-High Block
- Top Capping Unit
- Freestanding Block
- Standard Block
- Corner Block
- Standard Top Block
- Corner/End Unit
- Half-high Top Block

**ISOMETRIC VIEW
- FRONT**

ISOMETRIC VIEW - REAR



MAGNUMSTONE™ BLOCKS



STANDARD

1370 lbs (621 kgs)



STANDARD BASE

1345 lbs (610 kgs)



STANDARD TOP

1220 lbs (553 kgs)



HALF-HIGH

750 lbs (340 kgs)



HALF-HIGH BASE

725 lbs (328 kgs)



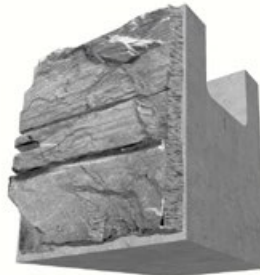
HALF-HIGH TOP

680 lbs (308 kgs)



HALF-WIDE

835 lbs (378 kg)



HALF-WIDE BASE

823 lbs (373 kgs)



HALF-WIDE TOP

760 lbs (345 kgs)

Weights and dimensions are nominal. Specifications may change. Verify exact information with your local producer.



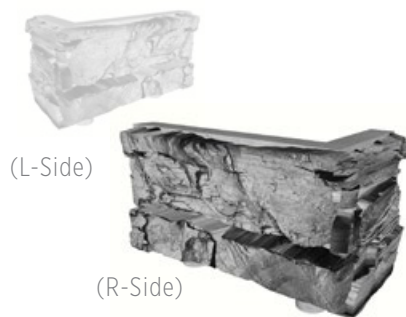
CORNERBLOCK STANDARD

1700 lbs (771 kgs)



CORNERBLOCK BASE

1675 lbs (760 kgs)



CORNERBLOCK TOP

1500 lbs (680 kgs)



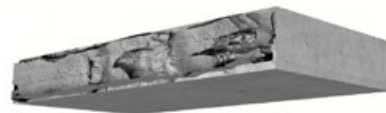
2 SIDED FREESTANDING

900 lbs (408 kgs)



3 SIDED FREESTANDING

900 lbs (408 kgs)



STEP/CAP

290 lbs (131 kgs)



CORNER/END

340 lbs (154 kgs)



HALF-HIGH CORNER/END

170 lbs (77 kgs)



4FT EXTENDER

820 lbs (372 kgs)

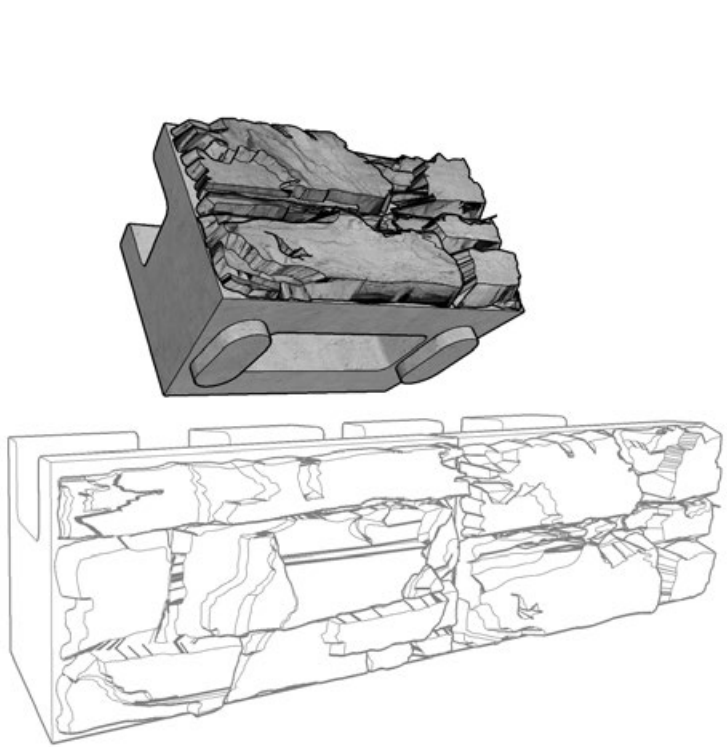


2FT EXTENDER

520 lbs (236 kgs)

Weights and dimensions are nominal. Specifications may change. Verify exact information with your local producer.

MAGNUMSTONE™ STANDARD BLOCK



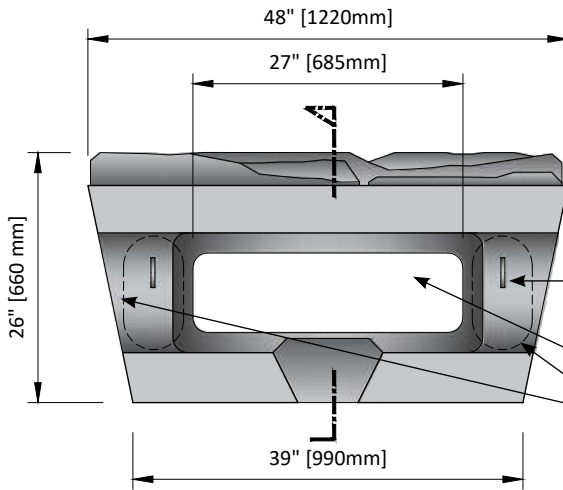
PERSPECTIVE



STANDARD

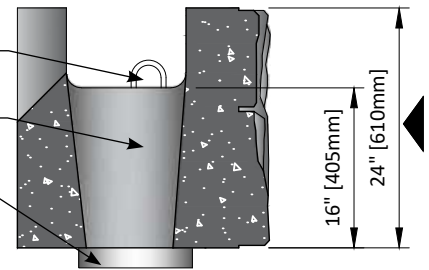
1370 lbs (621 kgs)

Height	24"	610mm
Depth	26"	660mm
Face Width	48"	1220mm
Back Width	39"	990mm
Face Area	8 sq ft	0.745 m ²
Setback	2.4°	



TOP VIEW

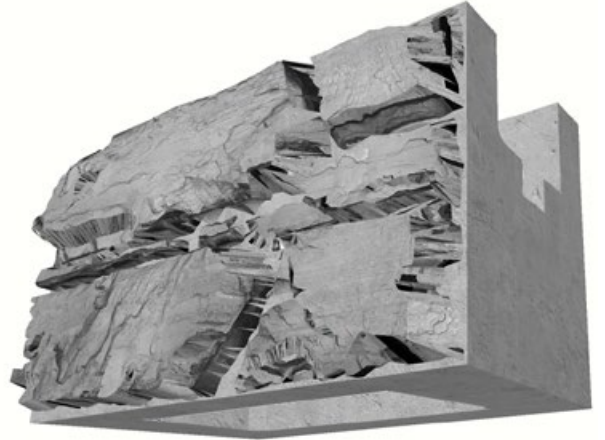
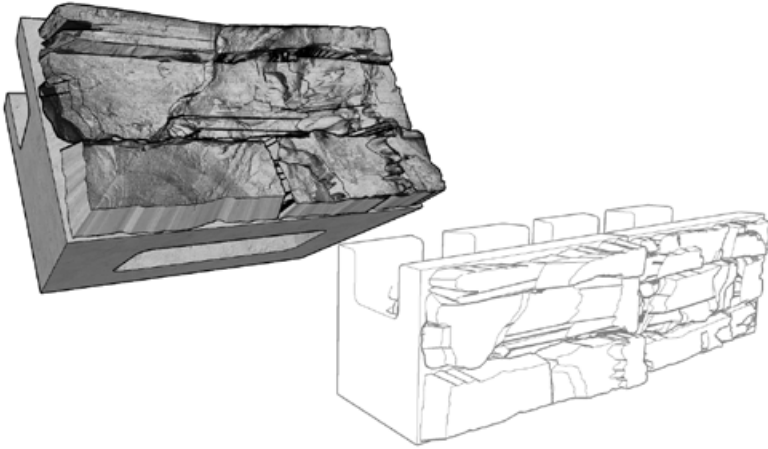
Lifting Hook
Hollow Core
Securelug



SECTION

Weights and dimensions are nominal. Specifications may change. Verify exact information with your local producer.

MAGNUMSTONE™ STANDARD BASE BLOCK

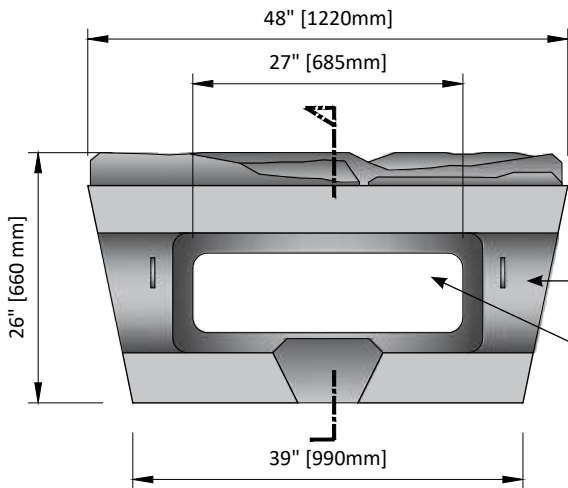


STANDARD BASE

1345 lbs (610 kgs)

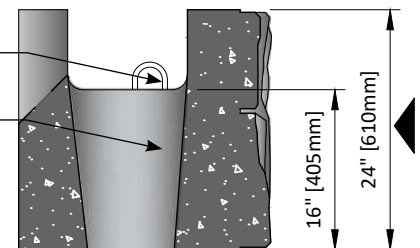
Height	24"	610mm
Depth	26"	660mm
Face Width	48"	1220mm
Back Width	39"	990mm
Face Area	8 sq ft	0.745 m ²
Setback	2.4°	

PERSPECTIVE



Lifting Hook

Hollow Core

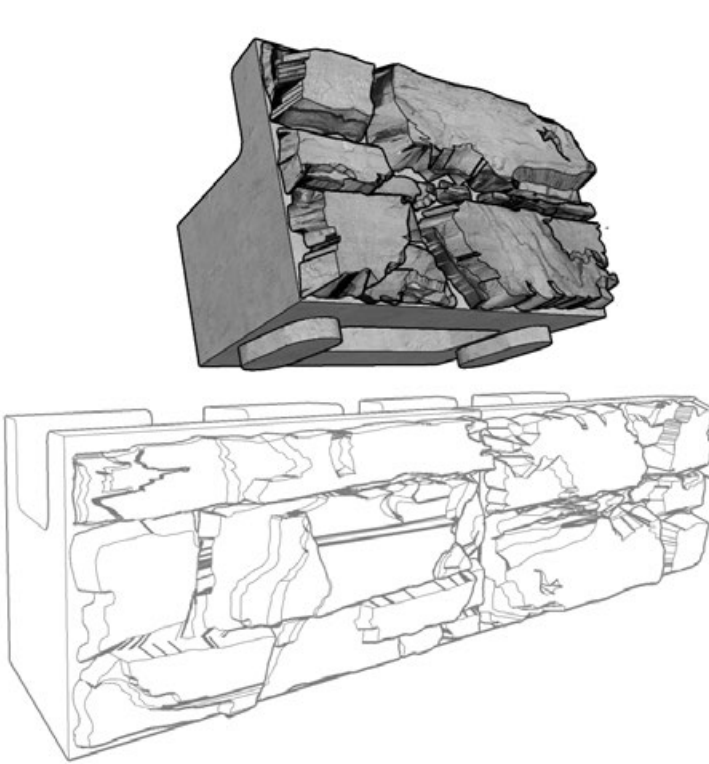


TOP VIEW

SECTION

Weights and dimensions are nominal. Specifications may change. Verify exact information with your local producer.

MAGNUMSTONE™ STANDARD TOP BLOCK



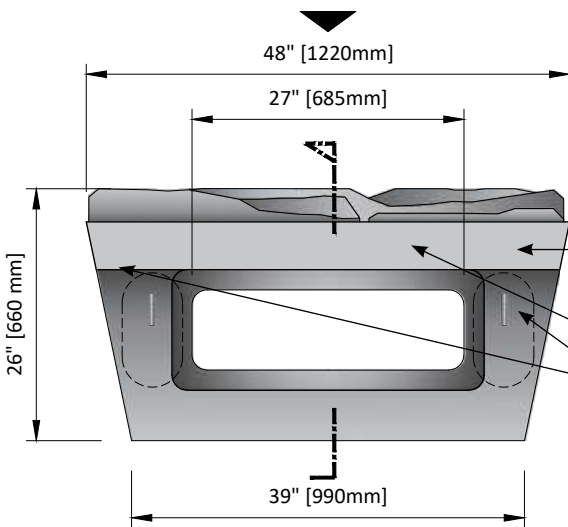
PERSPECTIVE



STANDARD TOP

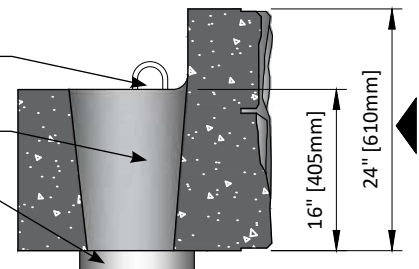
1220 lbs (553 kgs)

Height	24"	610mm
Depth	26"	660mm
Face Width	48"	1220mm
Back Width	39"	990mm
Face Area	8 sq ft	0.745 m2
Setback	2.4°	



TOP VIEW

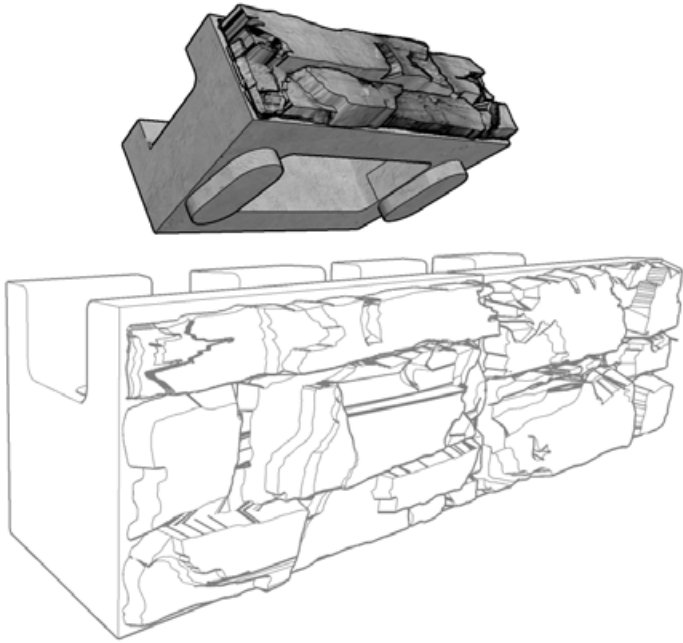
Lifting Hook
Hollow Core
Securelug



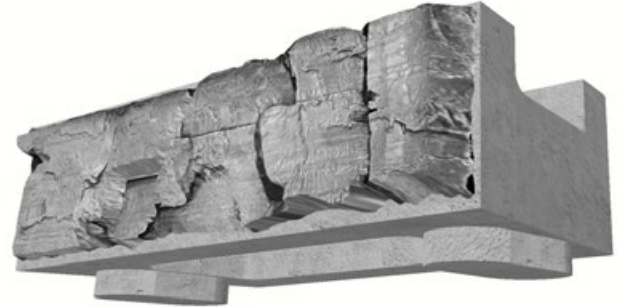
SECTION

Weights and dimensions are nominal. Specifications may change. Verify exact information with your local producer.

MAGNUMSTONE™ HALF-HIGH BLOCK



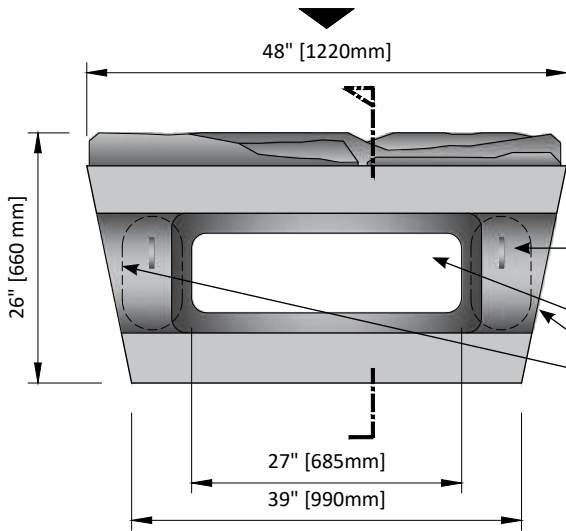
PERSPECTIVE



HALF-HIGH

750 lbs (340 kgs)

Height	12"	305mm
Depth	26"	660mm
Face Width	48"	1220mm
Back Width	39"	990mm
Face Area	4 sq ft	0.37 m2
Setback	2.4°	

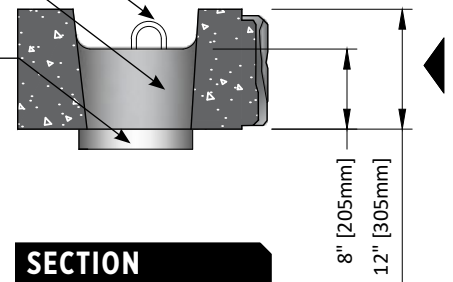


TOP VIEW

Lifting Hook

Hollow Core

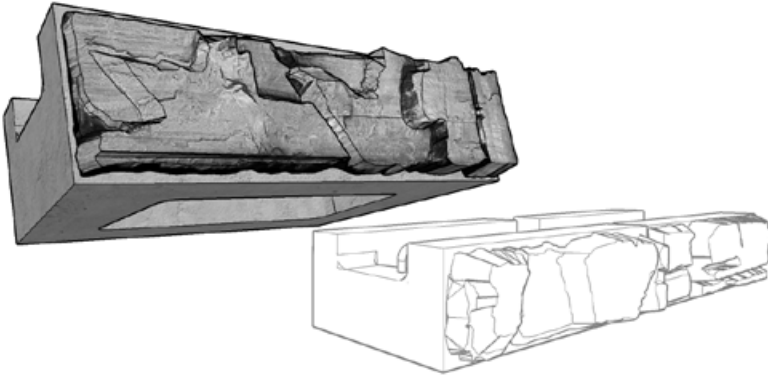
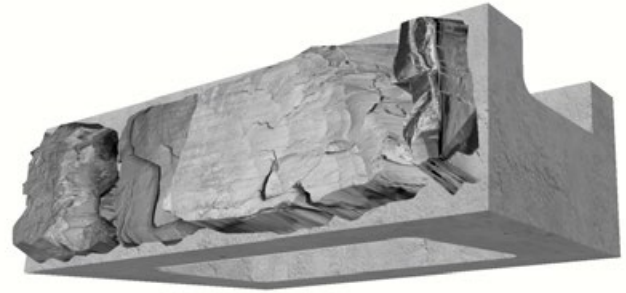
Securelug



SECTION

Weights and dimensions are nominal. Specifications may change. Verify exact information with your local producer.

MAGNUMSTONE™ HALF-HIGH BASE BLOCK

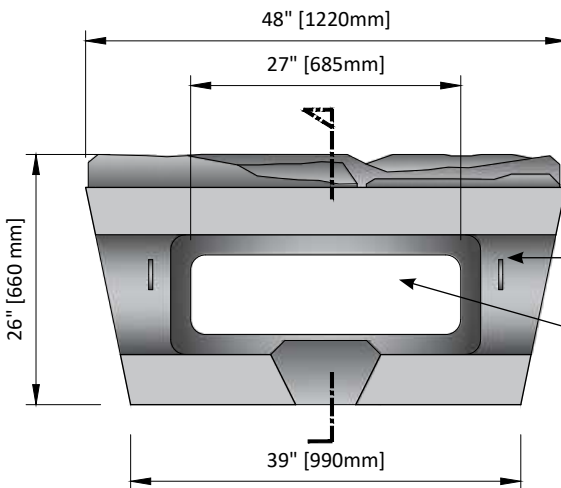


PERSPECTIVE

HALF-HIGH BASE

725 lbs (328 kgs)

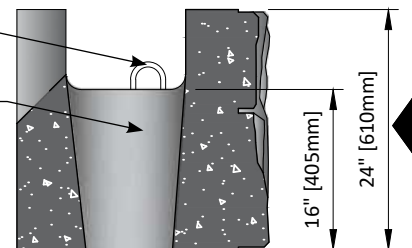
Height	24"	610mm
Depth	24"	610mm
Face Width	48"	1220mm
Back Width	39"	990mm
Face Area	4 sq ft	0.37 m2
Setback	2.4°	



TOP VIEW

Lifting Hook

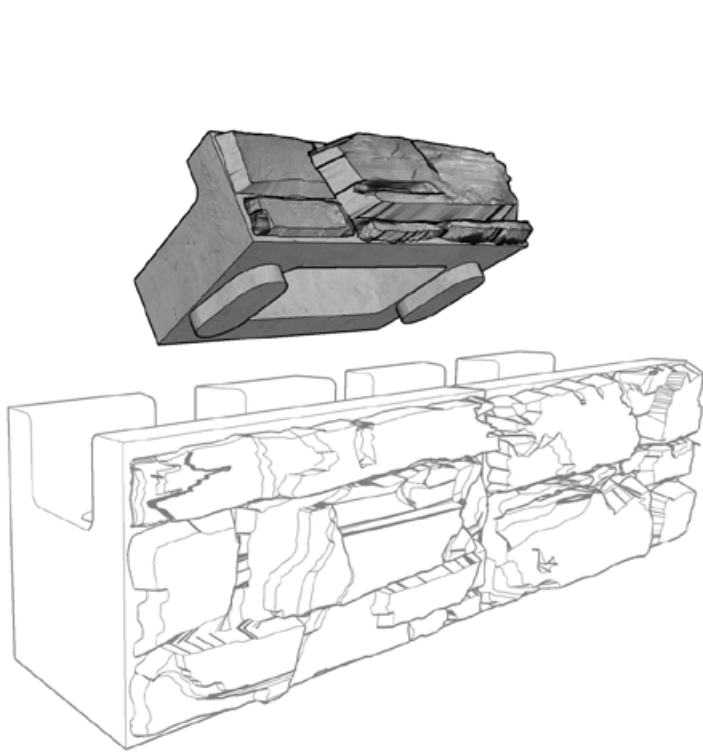
Hollow Core



SECTION

Weights and dimensions are nominal. Specifications may change. Verify exact information with your local producer.

MAGNUMSTONE™ HALF-HIGH TOP BLOCK



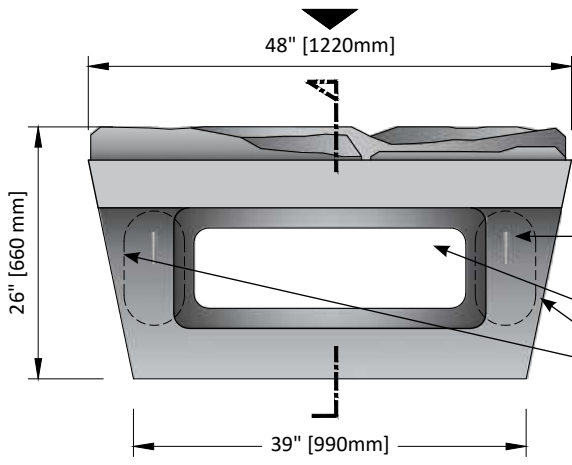
PERSPECTIVE



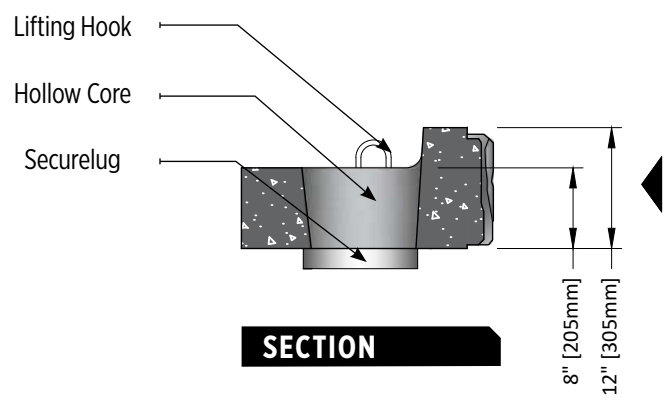
HALF-HIGH TOP

680 lbs (308 kgs)

Height	12"	305mm
Depth	24"	610mm
Face Width	48"	1220mm
Back Width	39"	990mm
Face Area	4 sq ft	0.37 m ²
Setback	2.4°	



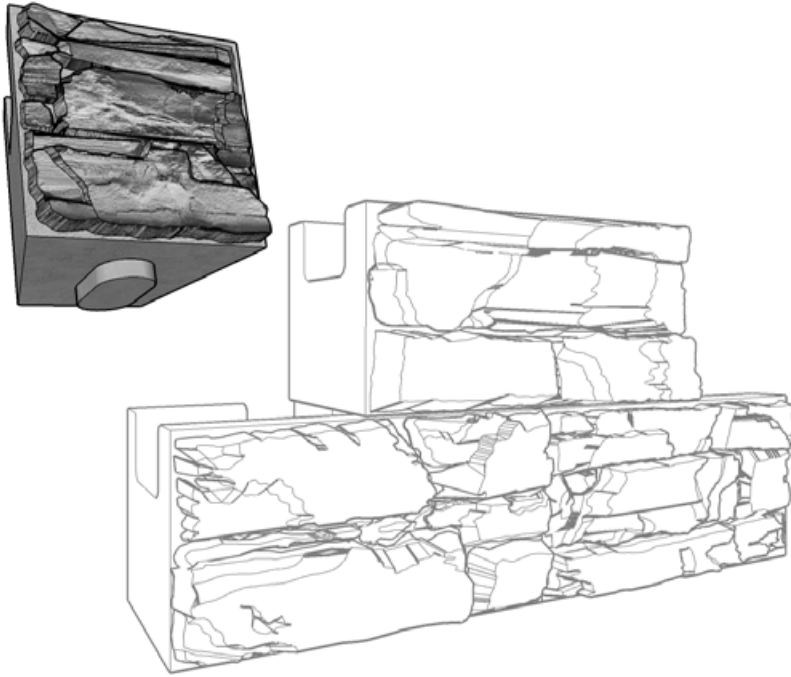
TOP VIEW



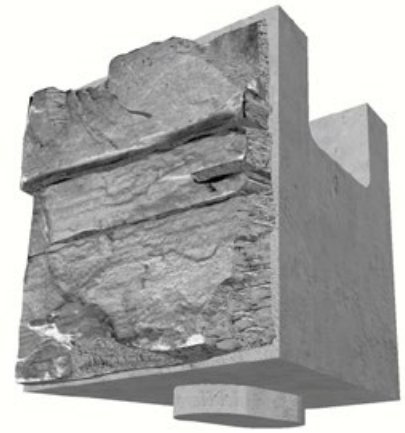
SECTION

Weights and dimensions are nominal. Specifications may change. Verify exact information with your local producer.

MAGNUMSTONE™ HALF-WIDE BLOCK



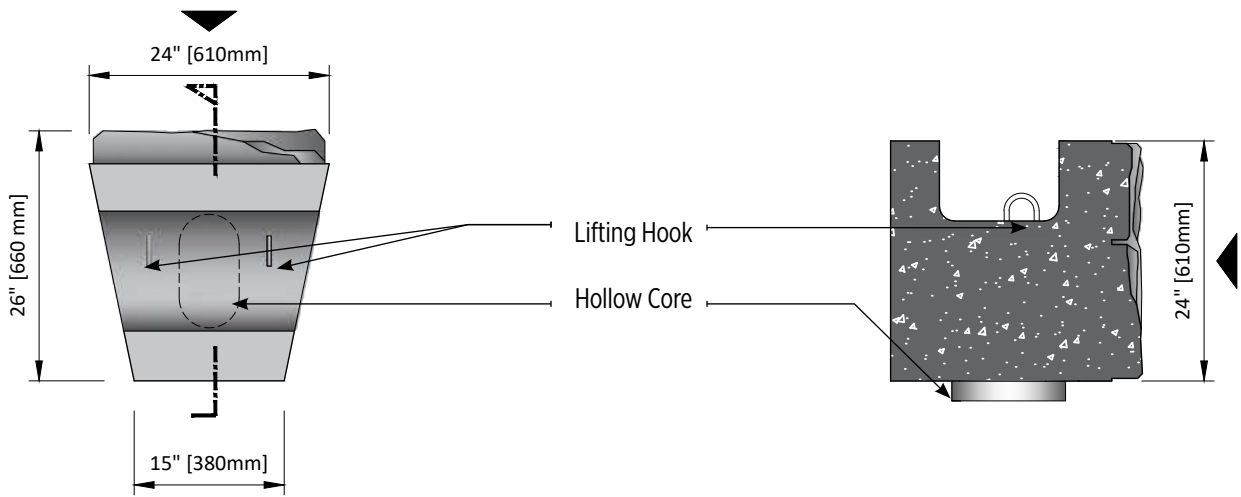
PERSPECTIVE



HALF-WIDE

835 lbs (378 kgs)

Height	24"	610mm
Depth	26"	660mm
Face Width	24"	610mm
Back Width	15"	380mm
Face Area	4 sq ft	0.37 m ²
Setback	2.4°	

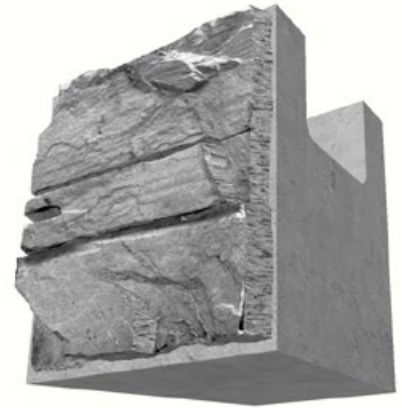
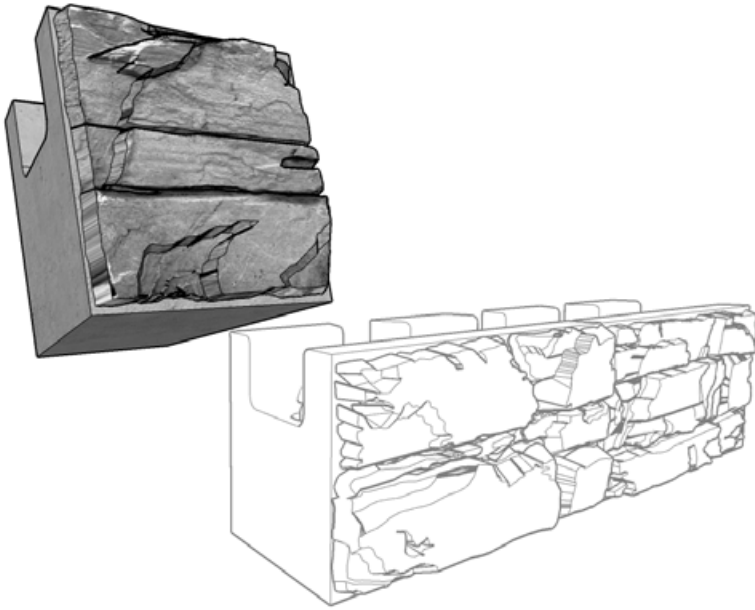


TOP VIEW

SECTION

Weights and dimensions are nominal. Specifications may change. Verify exact information with your local producer.

MAGNUMSTONE™ HALF-WIDE BASE BLOCK

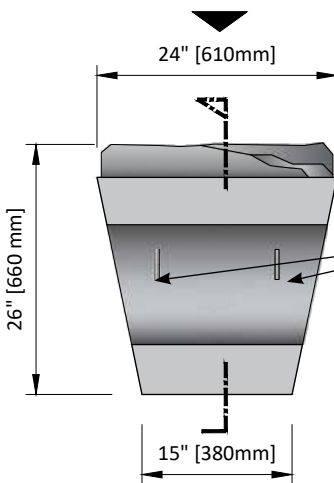


HALF-WIDE BASE

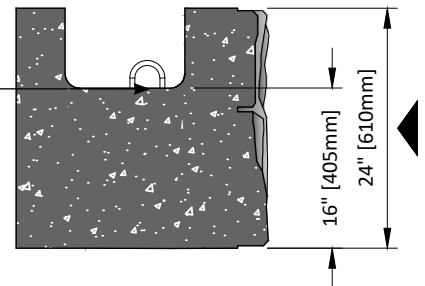
823 lbs (373 kgs)

Height	24"	610mm
Depth	26"	660mm
Face Width	24"	610mm
Back Width	15"	380mm
Face Area	4 sq ft	0.37 m2
Setback	2.4°	

PERSPECTIVE



Lifting Hook

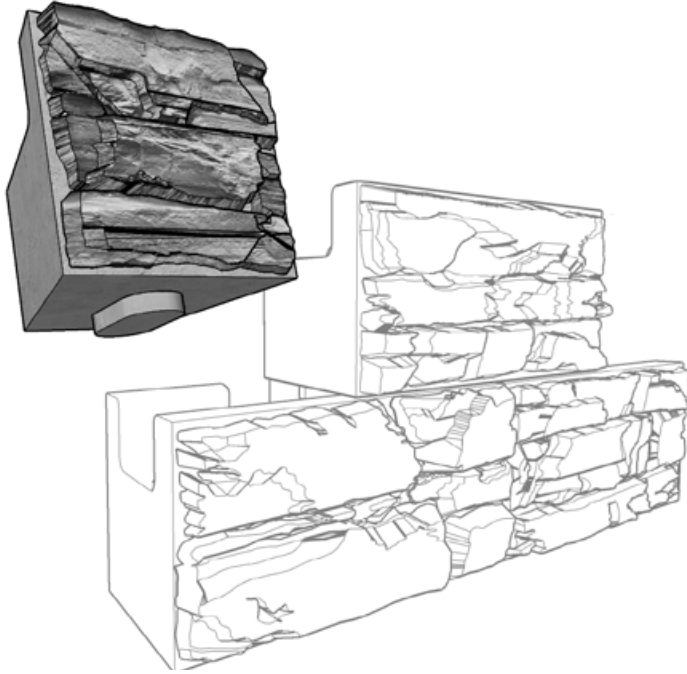


TOP VIEW

SECTION

Weights and dimensions are nominal. Specifications may change. Verify exact information with your local producer.

MAGNUMSTONE™ HALF-WIDE TOP BLOCK



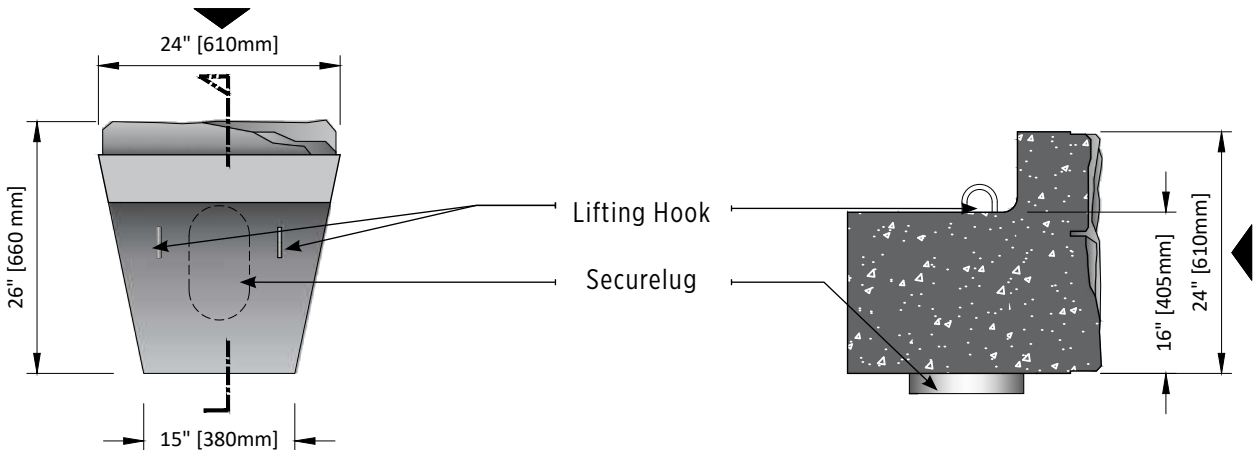
PERSPECTIVE



HALF-WIDE TOP

760 lbs (345 kgs)

Height	24"	610mm
Depth	26"	660mm
Face Width	24"	610mm
Back Width	15"	380mm
Face Area	4 sq ft	0.37 m ²
Setback	2.4°	



TOP VIEW

SECTION

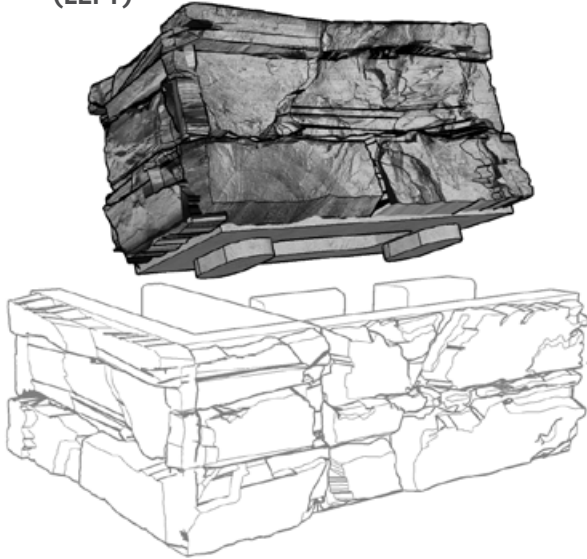
Weights and dimensions are nominal. Specifications may change. Verify exact information with your local producer.

MAGNUMSTONE™ CORNER BLOCK

(RIGHT)



(LEFT)

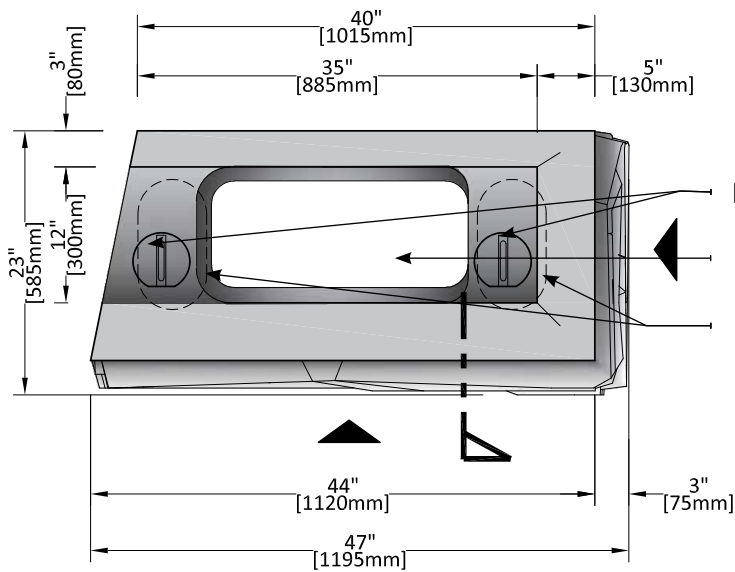


CORNER BLOCK

1700 lbs (771 kgs)

Height	24"	610mm
Side Width	23"	610mm
Face Width	47"	1195mm
Back Width	39"	990mm
Face Area	12 sq ft	1.10 m ²
Setback	2.4°	

PERSPECTIVE

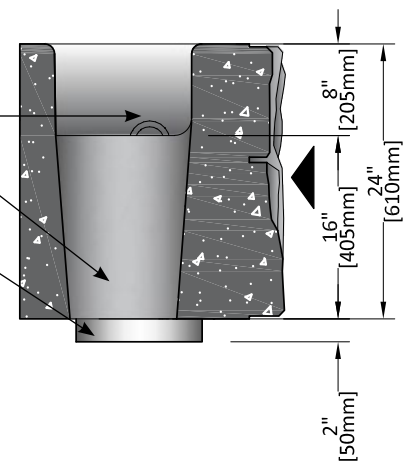


TOP VIEW

NOTE:

(*) Image reference in Right Side Block
 (**) Block also available in Left Side

Lifting Hook
 Hollow Core
 Securelug



SECTION

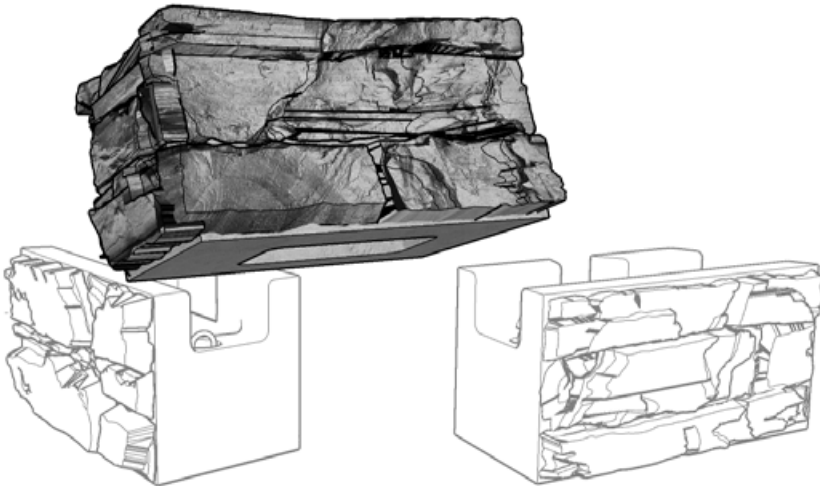
Weights and dimensions are nominal. Specifications may change. Verify exact information with your local producer.

MAGNUMSTONE™ BASE CORNER BLOCK

(RIGHT)



(LEFT)

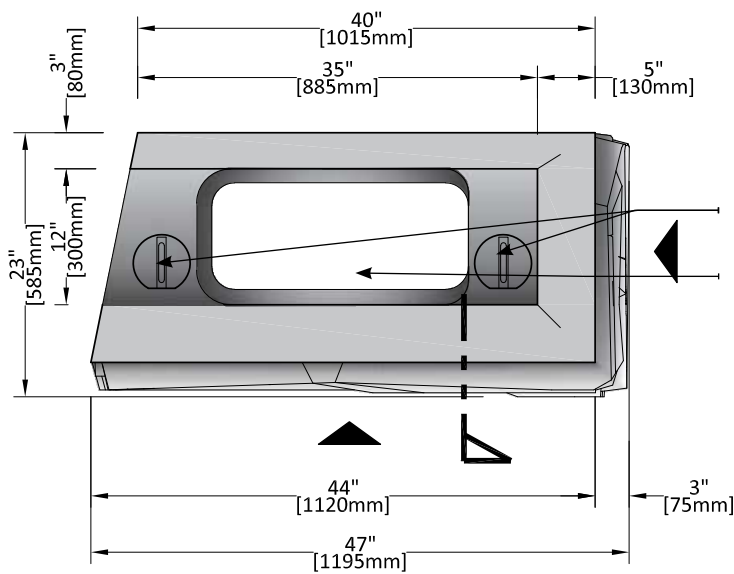


CORNER BLOCK BASE

1675 lbs (760 kgs)

Height	24"	610mm
Side Width	23"	610mm
Face Width	47"	1195mm
Back Width	39"	990mm
Face Area	12 sq ft	1.10 m ²
Setback	2.4°	

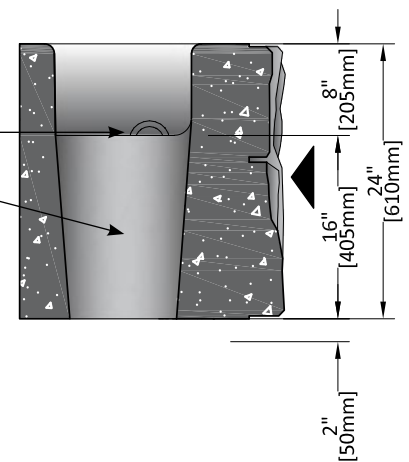
PERSPECTIVE



TOP VIEW

NOTE:

- (*) Image reference in Right Side Block
- (**) Block also available in Left Side

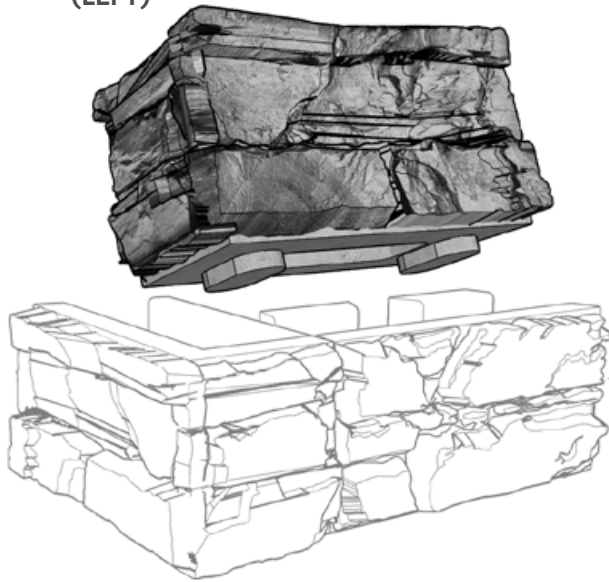


SECTION

Weights and dimensions are nominal. Specifications may change. Verify exact information with your local producer.

MAGNUMSTONE™ TOP CORNER BLOCK

(LEFT)



(RIGHT)

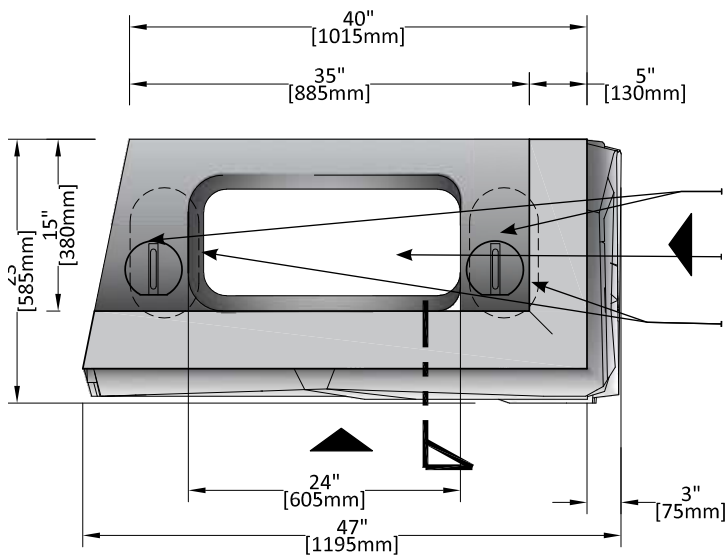


CORNER BLOCK TOP

1500 lbs (680 kgs)

Height	24"	610mm
Side Width	23"	610mm
Face Width	47"	1195mm
Back Width	39"	990mm
Face Area	12 sq ft	1.10 m ²
Setback	2.4°	

PERSPECTIVE



TOP VIEW

NOTE:

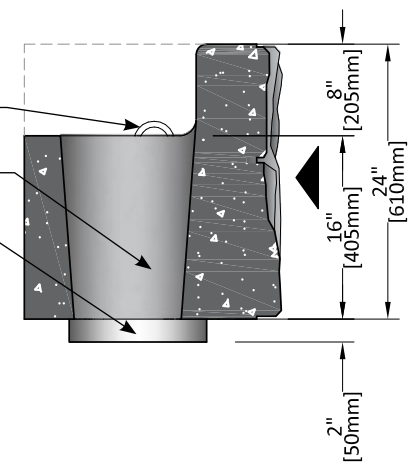
(*) Image reference in Right Side Block

(**) Block also available in Left Side

Lifting Hook

Hollow Core

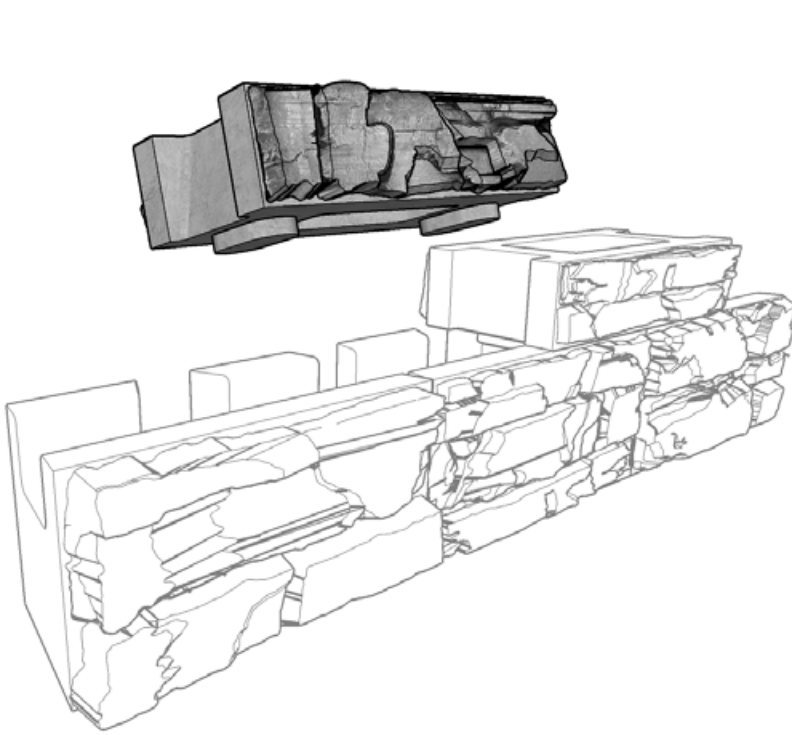
Securelug



SECTION

Weights and dimensions are nominal. Specifications may change. Verify exact information with your local producer.

MAGNUMSTONE™ FREESTANDING BLOCKS



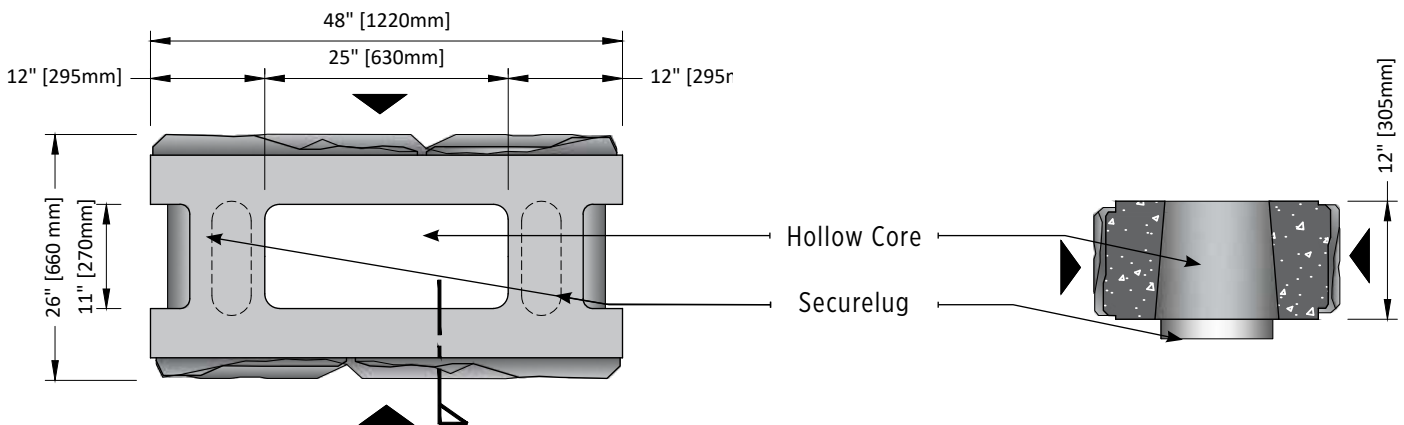
PERSPECTIVE



2-SIDED

900 lbs (408 kgs)

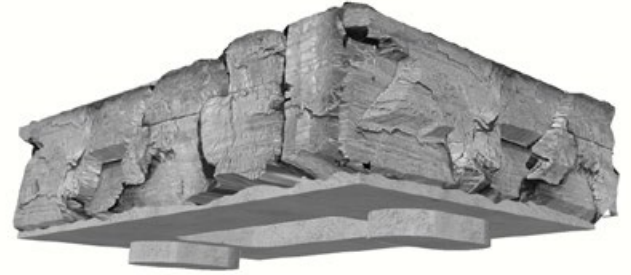
Height	12"	305mm
Depth	26"	660mm
Face Width	48"	1220mm
Back Width	48"	1220mm
Face Area	4 sq ft	0.37 m2
Setback	0°	



TOP VIEW

SECTION

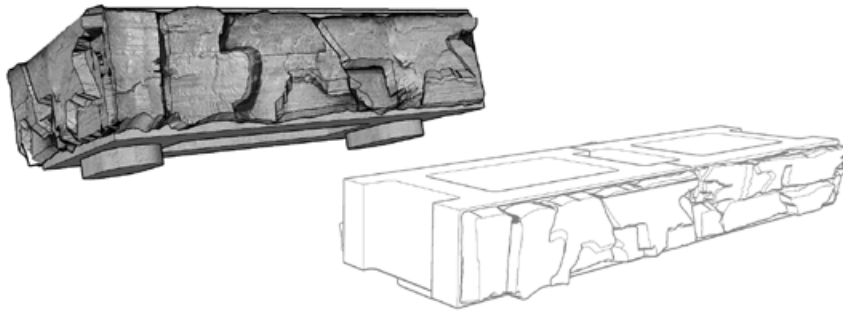
Weights and dimensions are nominal. Specifications may change. Verify exact information with your local producer.



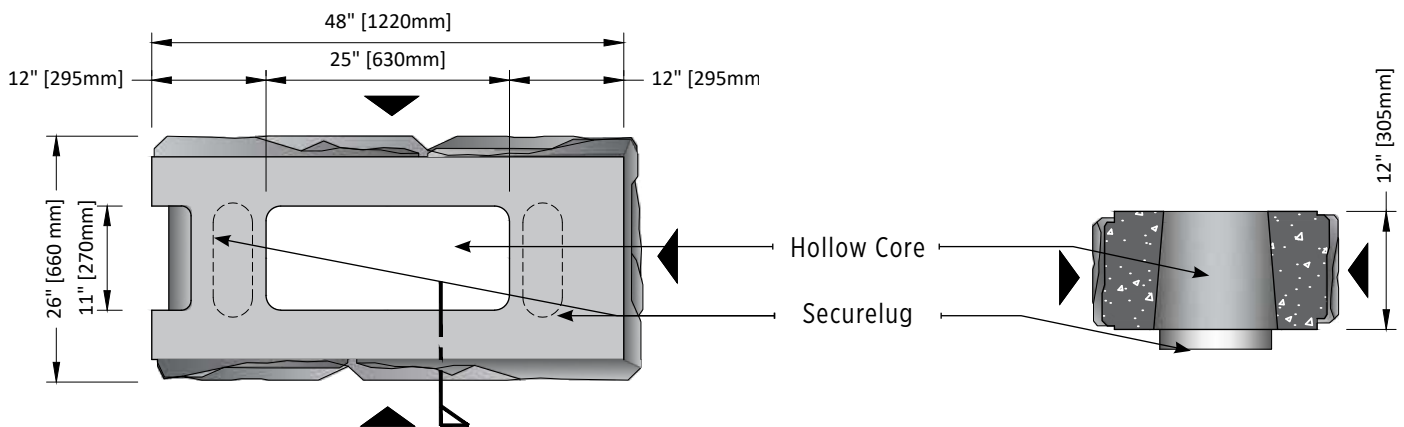
3-SIDED

900 lbs (408 kgs)

Height	12"	305mm
Depth	26"	660mm
Face Width	48"	1220mm
Back Width	48"	1220mm
Face Area	4 sq ft	0.37 m ²
Setback	0°	



PERSPECTIVE

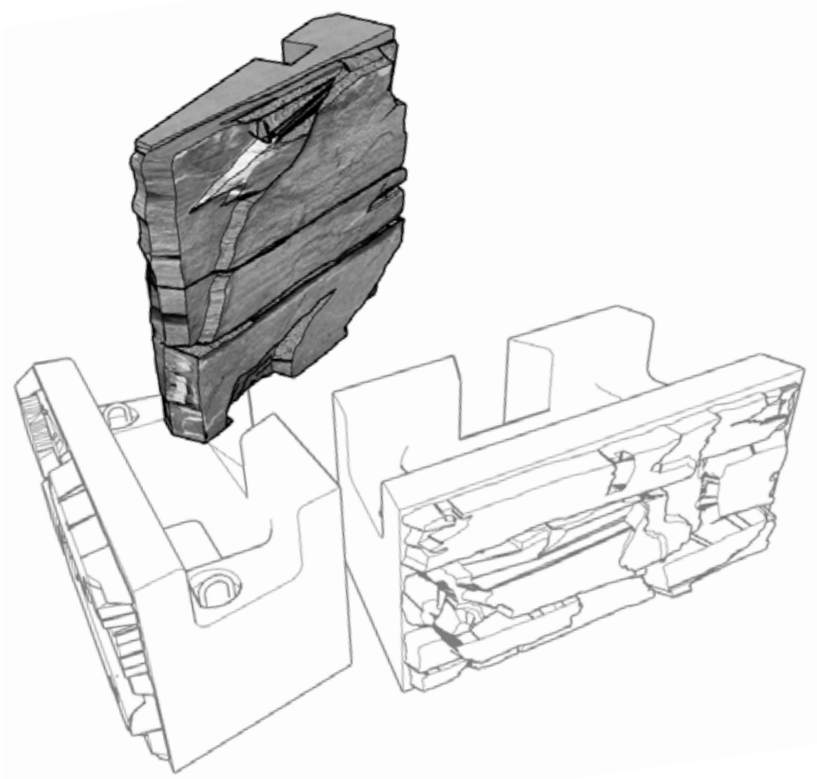


TOP VIEW

SECTION

Weights and dimensions are nominal. Specifications may change. Verify exact information with your local producer.

MAGNUMSTONE™ CORNER/END UNITS



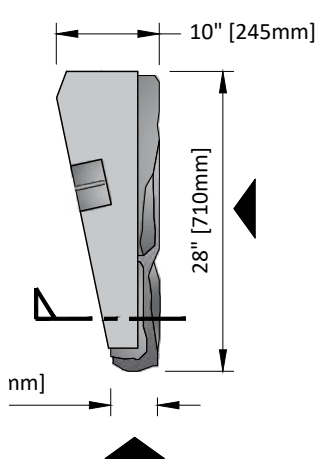
PERSPECTIVE



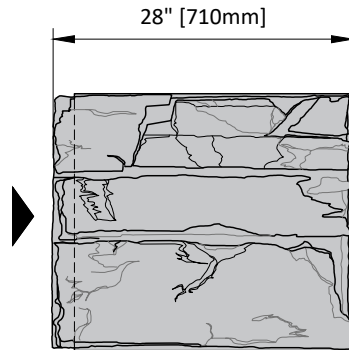
STANDARD CORNER/END UNIT

340 lbs (154 kgs)

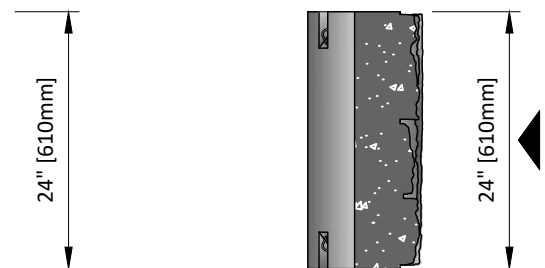
Height	24"	610mm
Depth	24"	610mm
Face Width	28"	710mm
Narrow Width	4"	110mm
Face Area	4.6 sqft	0.44 m2
Setback	2.4°	



TOP VIEW



FRONT VIEW



SECTION

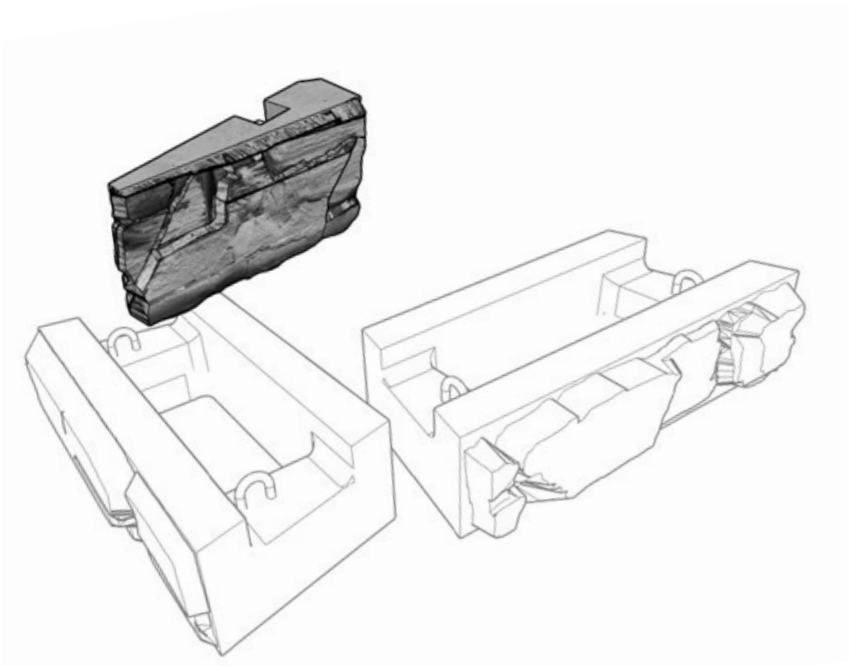
Weights and dimensions are nominal. Specifications may change. Verify exact information with your local producer.



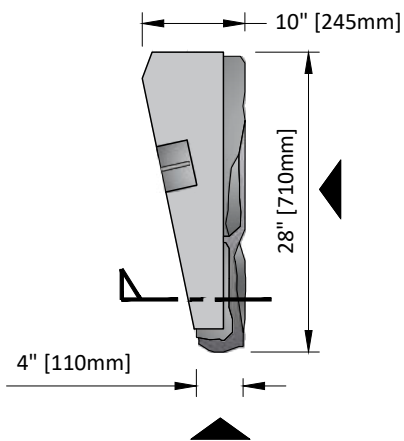
HALF-HIGH CORNER/END UNIT

170 lbs (77 kgs)

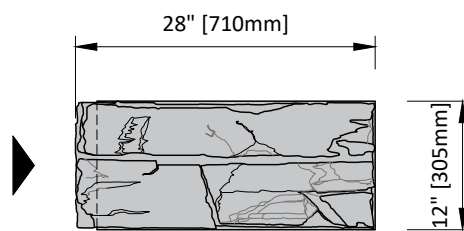
Height	12"	305mm
Depth	24"	610mm
Face Width	28"	710mm
Narrow Width	4"	110mm
Face Area	2.3 sq ft	0.44 m2
Setback	2.4°	



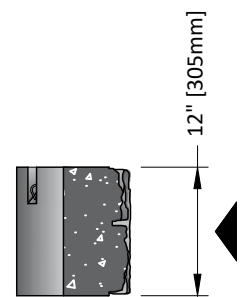
PERSPECTIVE



TOP VIEW



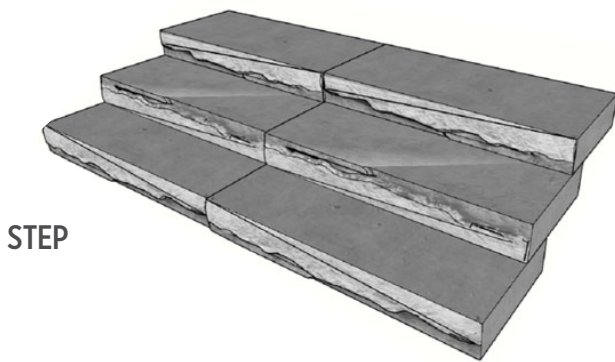
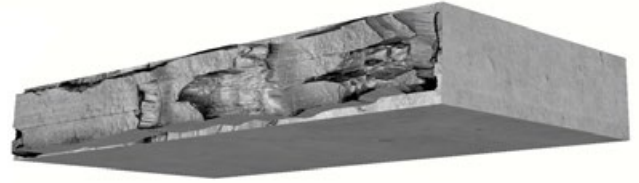
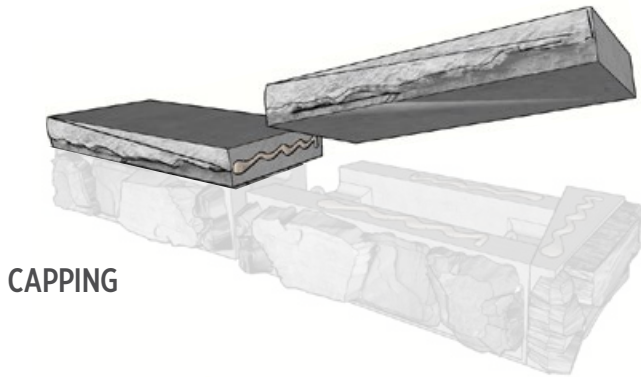
FRONT VIEW



SECTION

Weights and dimensions are nominal. Specifications may change. Verify exact information with your local producer.

MAGNUMSTONE™ BASE CORNER BLOCK



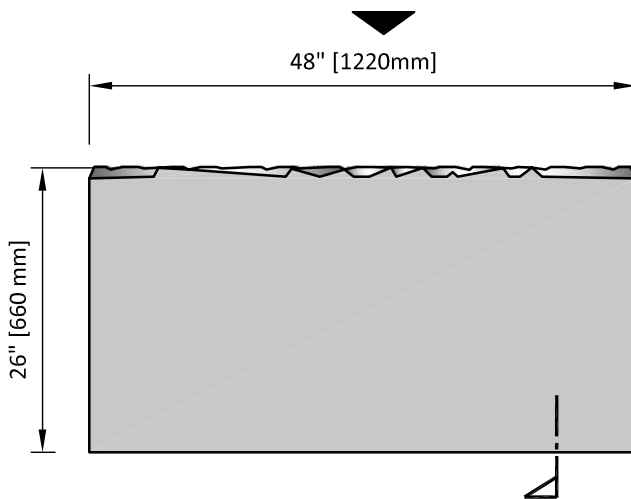
STEP/TOP CAPPING UNIT

290 lbs (131 kgs)

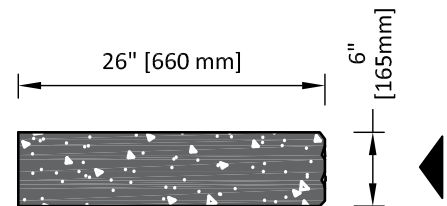
Height	6"	15.25mm
Depth	24"	610mm
Width	48"	1220mm

NOTE:
Cap Style may vary by Manufacturer

PERSPECTIVE



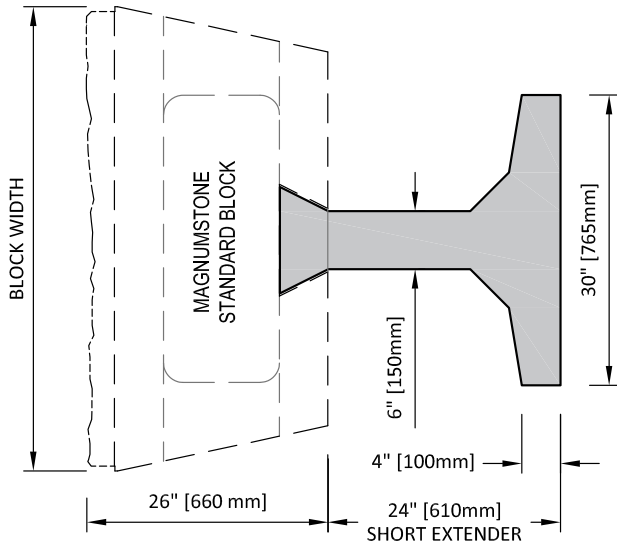
TOP VIEW



SECTION

Weights and dimensions are nominal. Specifications may change. Verify exact information with your local producer.

MAGNUMSTONE™ TOP CORNER BLOCK



TOP VIEW

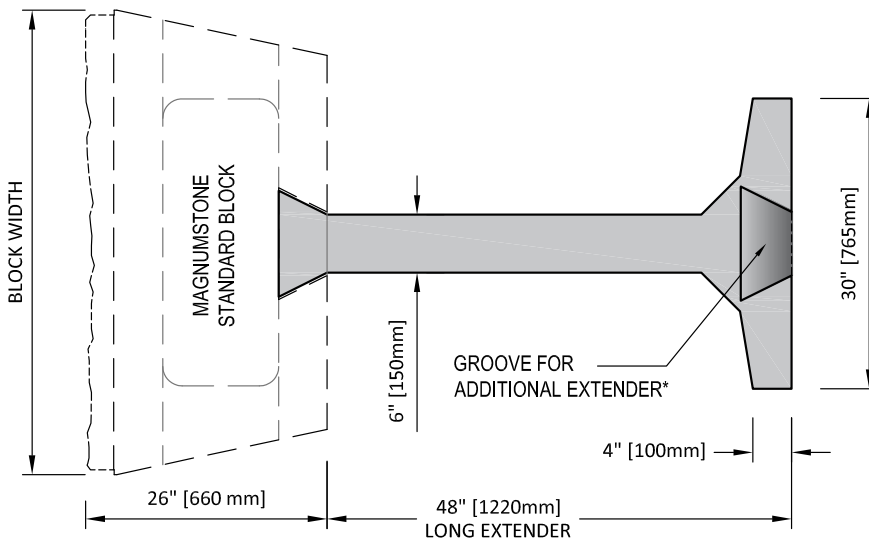


SHORT EXTENDER UNIT

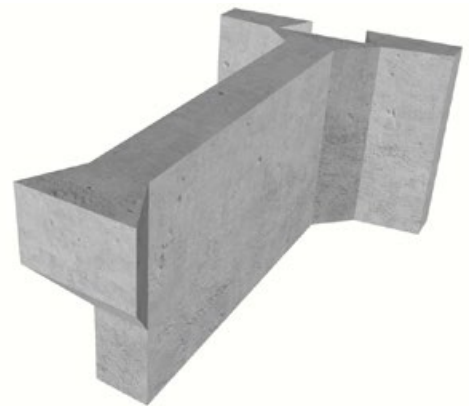
520 lbs (263 kgs)

Height	6"	15.25mm
Depth	24"	610mm
Width	48"	1220mm

NOTE:
For Gravity and Hybrid Retaining walls



TOP VIEW



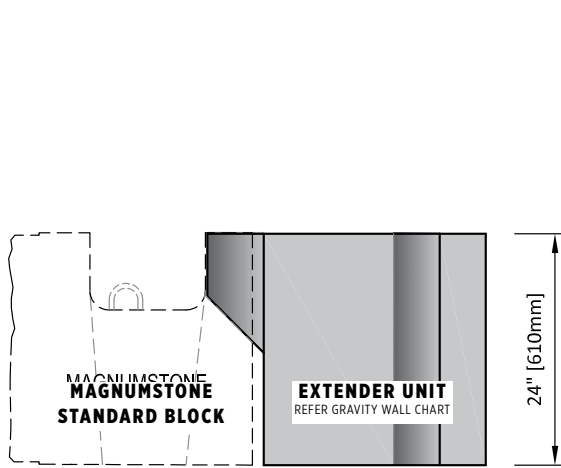
LONG EXTENDER UNIT

580 lbs (263 kgs)

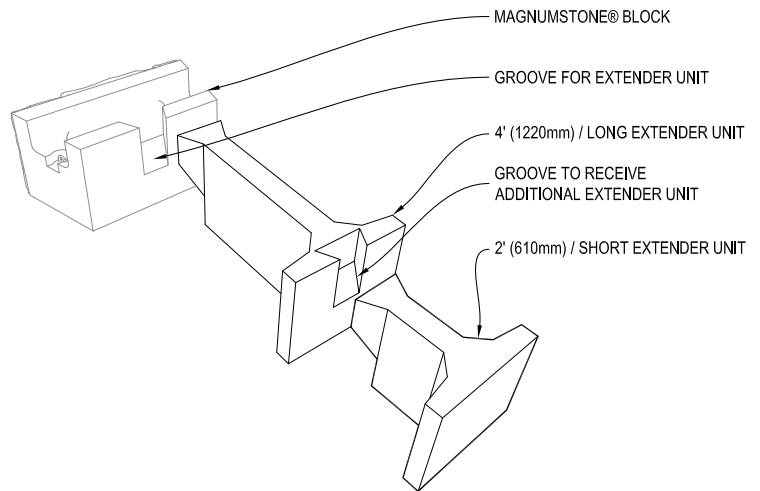
Height	6"	15.25mm
Depth	24"	610mm
Width	48"	1220mm

Weights and dimensions are nominal. Specifications may change. Verify exact information with your local producer.

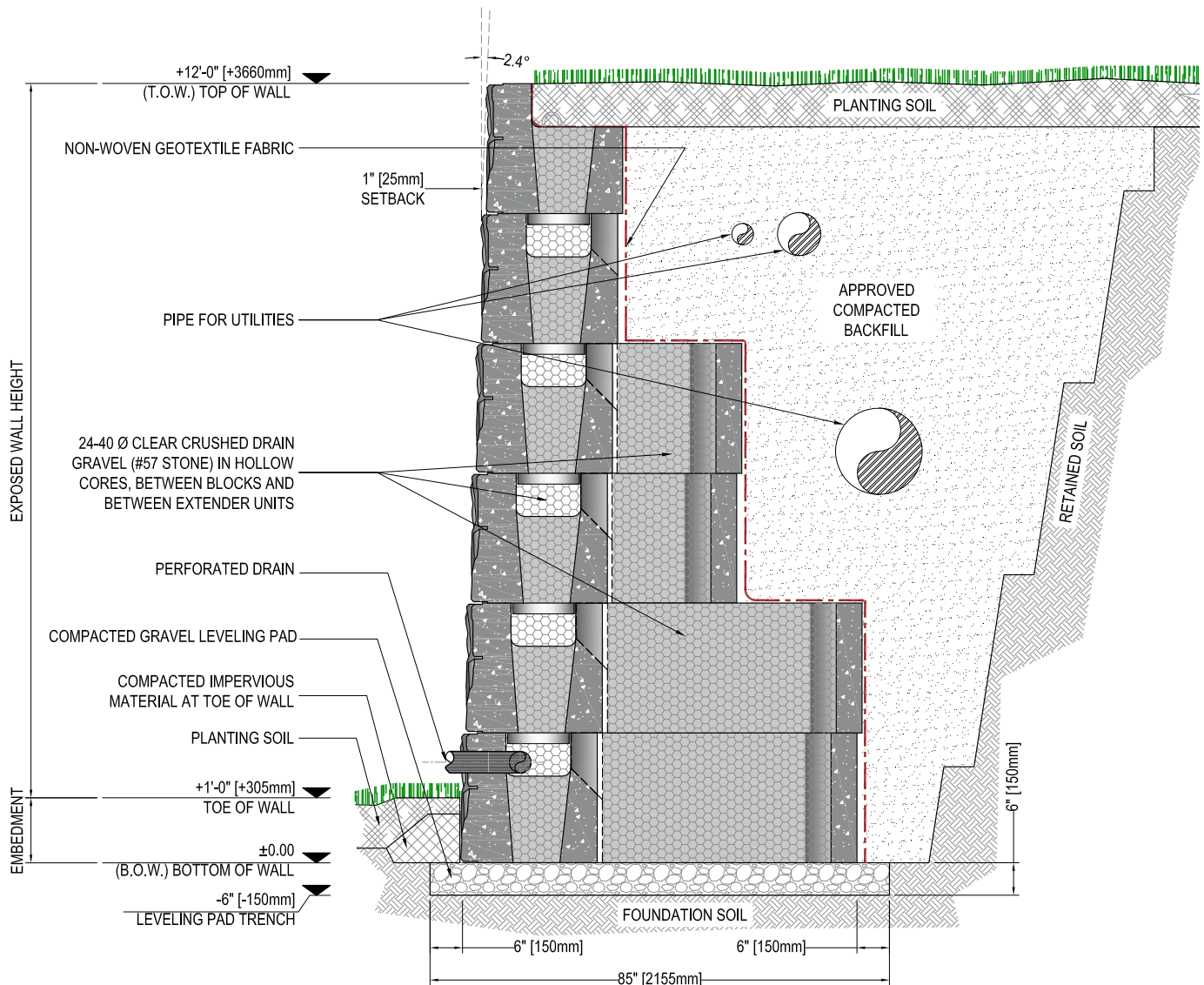
MAGNUMSTONE™ GRAVITY WALL



CONNECTION DETAIL



ISOMETRIC VIEW



TYPICAL CROSS SECTION

MAGNUMSTONE™ GRAVITY WALL CHARTS

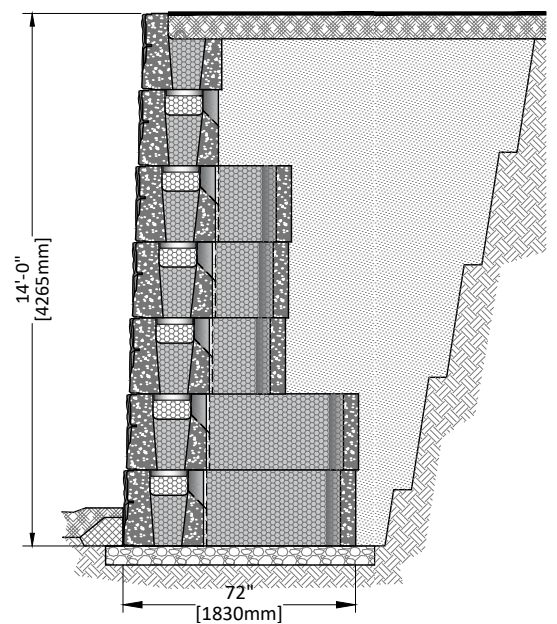
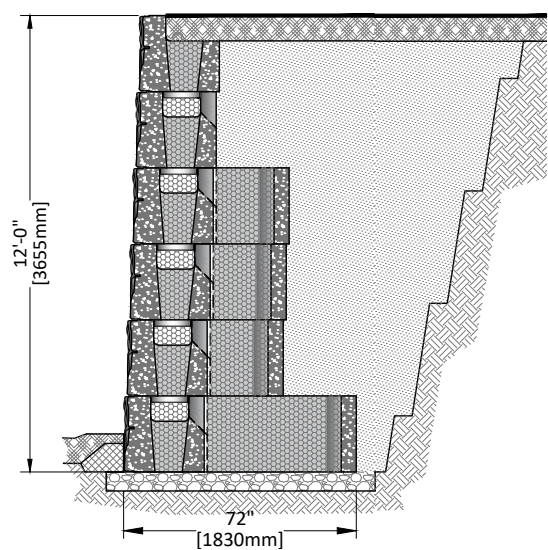
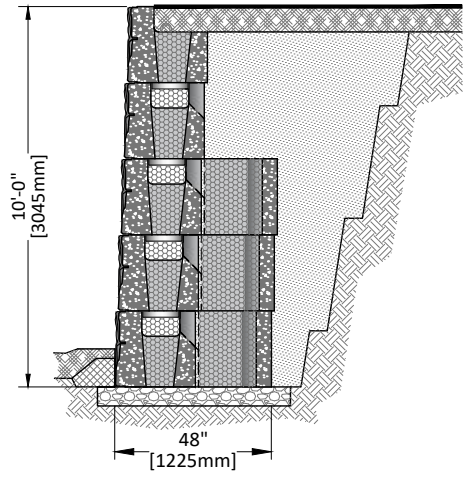
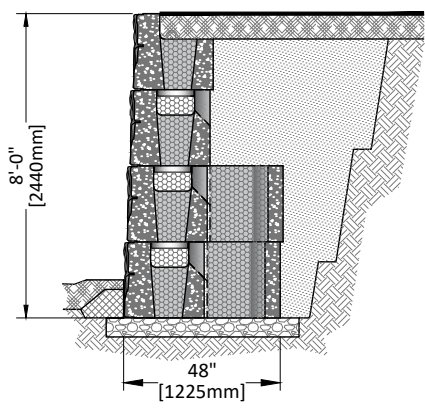
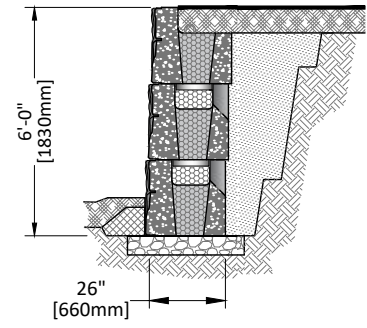
DESCRIPTION	
SLOPE ANGLE	0°
LIVE LOAD	0 PSF
RETAINED SOIL	28°
FOUNDATION	28°
INFILL SELECT FILL	34°
LEVELING PAD	CRUSHED GRAVEL

48" [1225mm]

72" [1830mm]

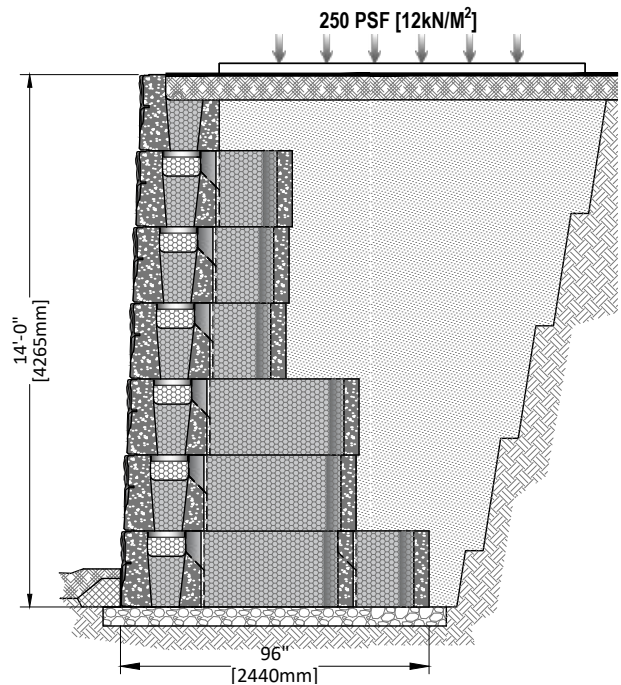
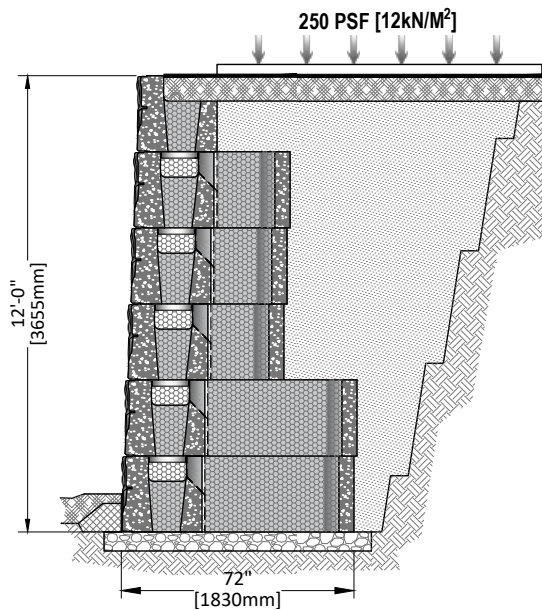
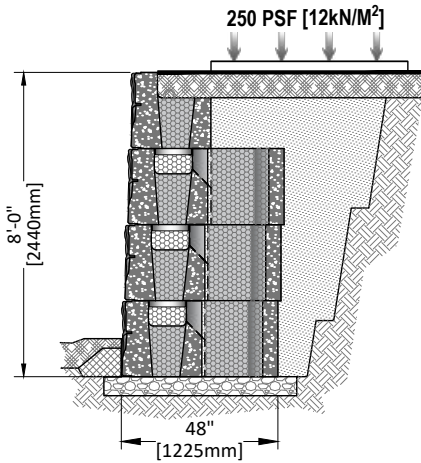
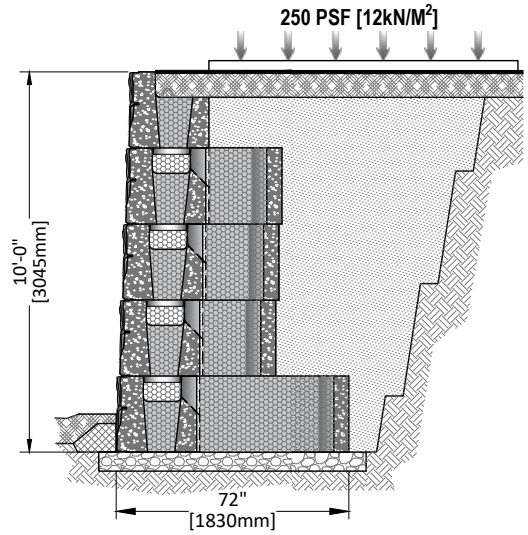
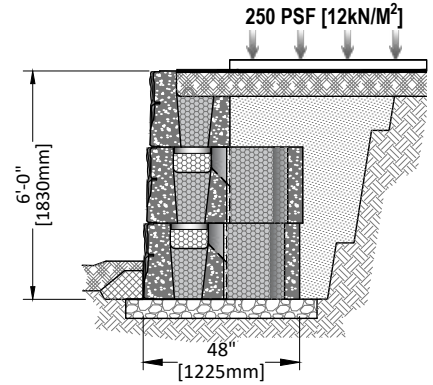
96" [2440mm]

120" [3050mm]



MAGNUMSTONE™ GRAVITY WALL CHARTS

DESCRIPTION	
SLOPE ANGLE	0°
LIVE LOAD	250 PSF
RETAINED SOIL	30°
FOUNDATION	30°
INFILL SELECT FILL	30°
LEVELING PAD	CRUSHED GRAVEL



MAGNUMSTONE™ GRAVITY WALL CHARTS

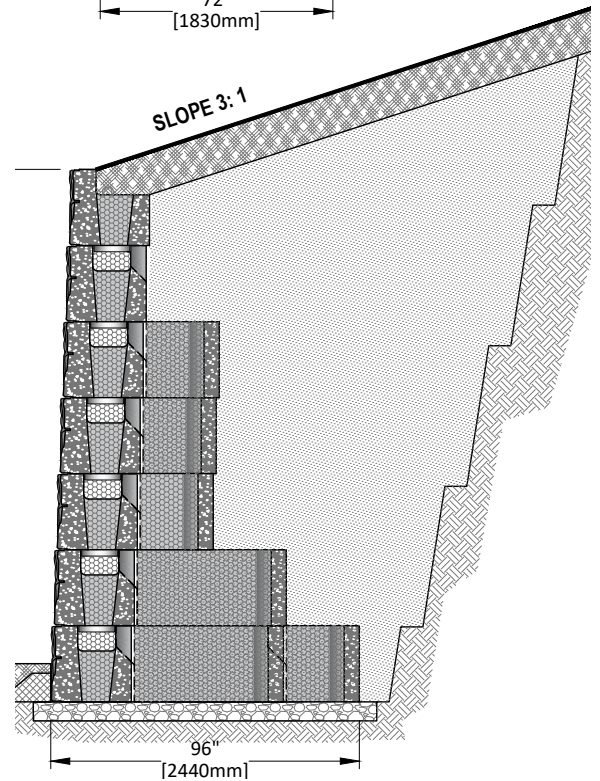
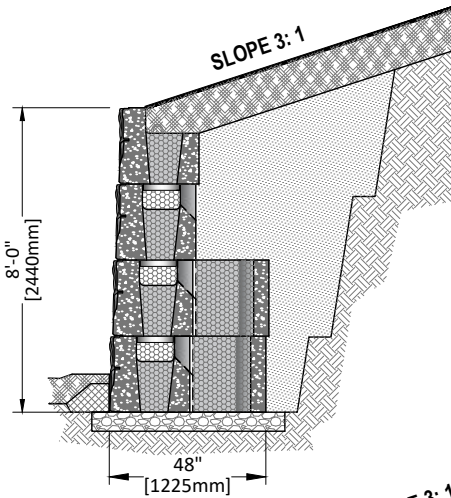
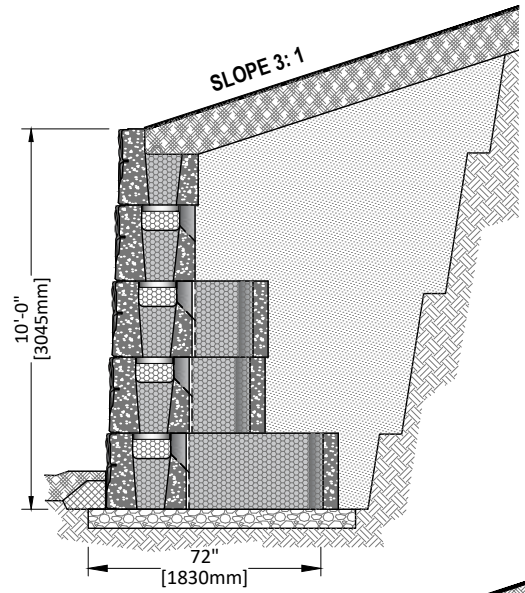
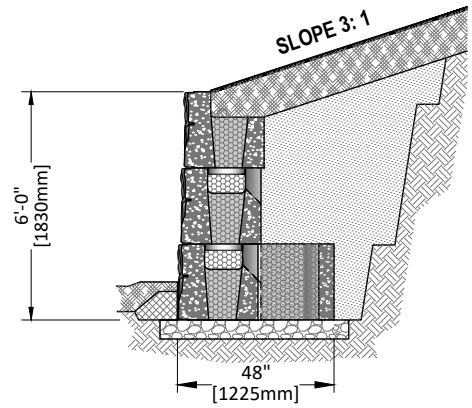
DESCRIPTION	
SLOPE ANGLE	18.4° (3H:1V)
LIVE LOAD	0 PSF
RETAINED SOIL	30°
FOUNDATION	30°
INFILL SELECT FILL	30°
LEVELING PAD	CRUSHED GRAVEL

48" [1225mm]

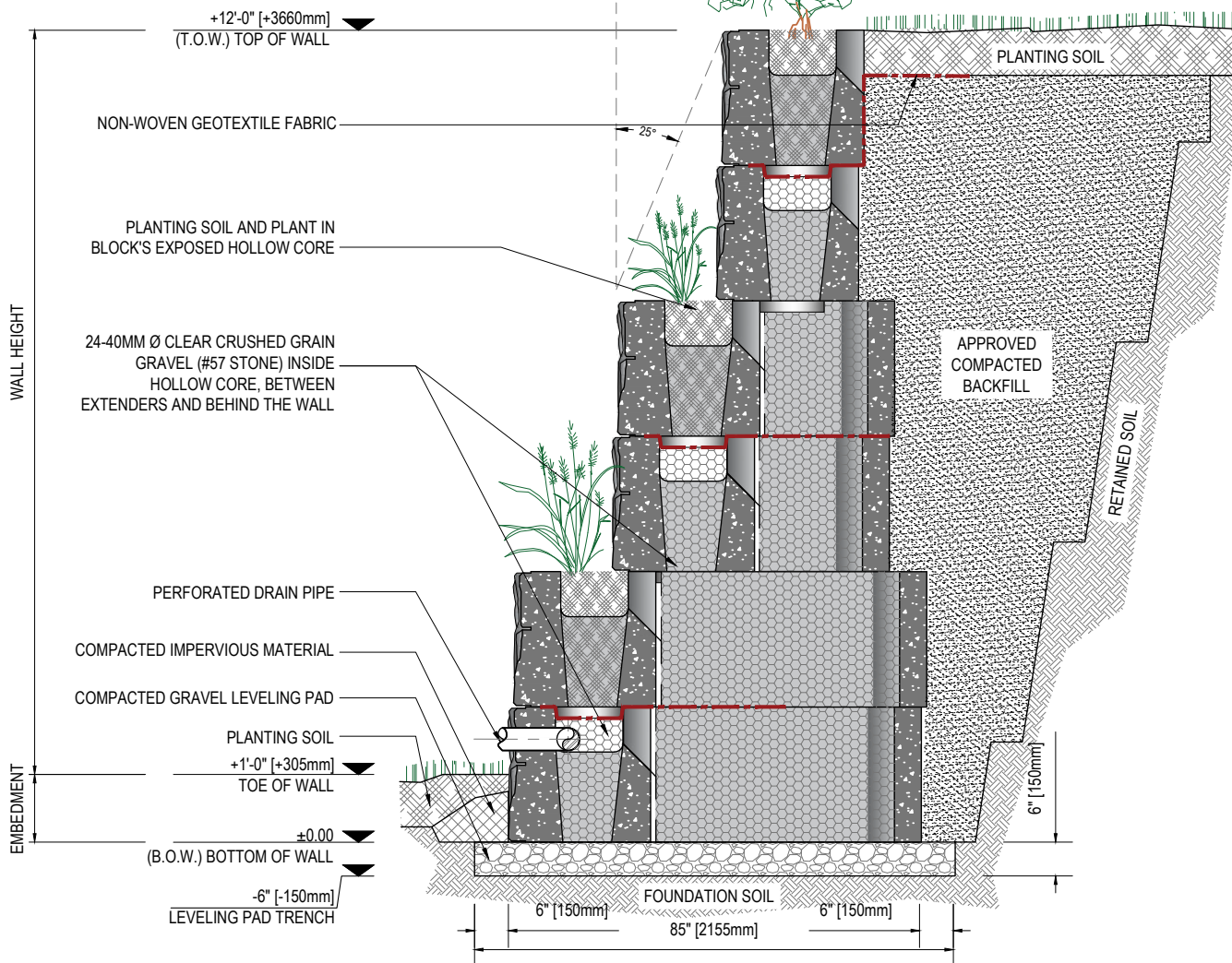
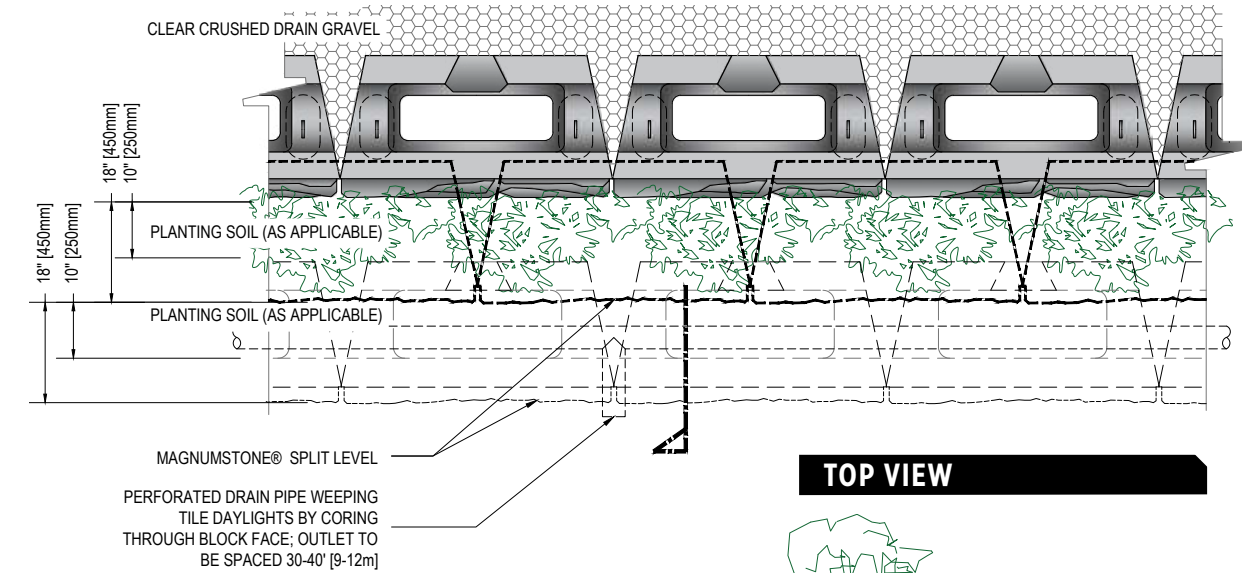
72" [1830mm]

96" [2440mm]

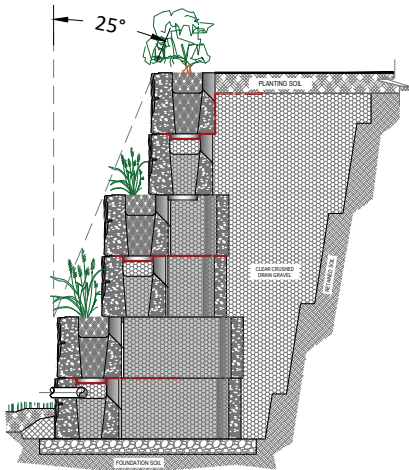
120" [3050mm]



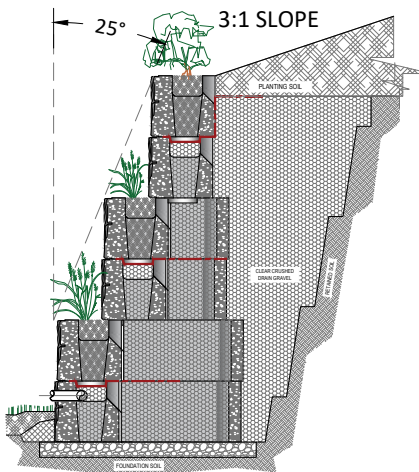
MAGNUMSTONE™ PLANTABLE WALL



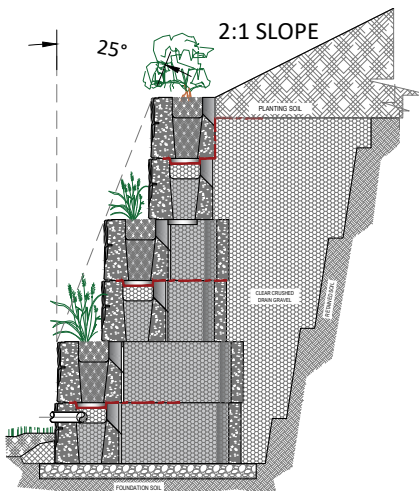
MAGNUMSTONE™ 25° SETBACK PLANTABLE WALL



SOIL TYPE	HEIGHT EXPOSED	HEIGHT EMBEDDED	TOTAL
34° SOIL	14.2' [4328 mm]	0.8' [244 mm]	15' [6706 mm]
30° SOIL	10.4' [3170 mm]	0.6' [183 mm]	11' [6706 mm]
26° SOIL	7.5' [2286 mm]	0.5' [152 mm]	8' [4572 mm]



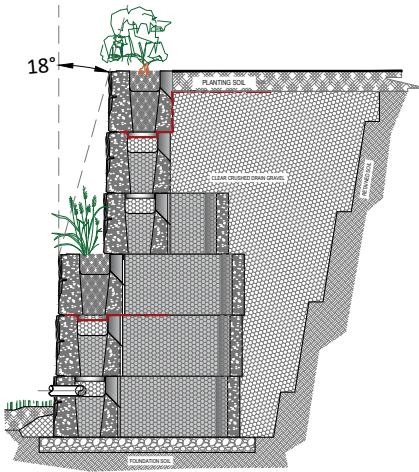
SOIL TYPE	HEIGHT EXPOSED	HEIGHT EMBEDDED	TOTAL
34° SOIL	11.3' [3444 mm]	0.7' [213 mm]	12' [3658 mm]
30° SOIL	7.5' [2286 mm]	0.5' [152 mm]	8' [4572 mm]
26° SOIL	5.5' [1676 mm]	0.5' [152 mm]	6' [1829 mm]



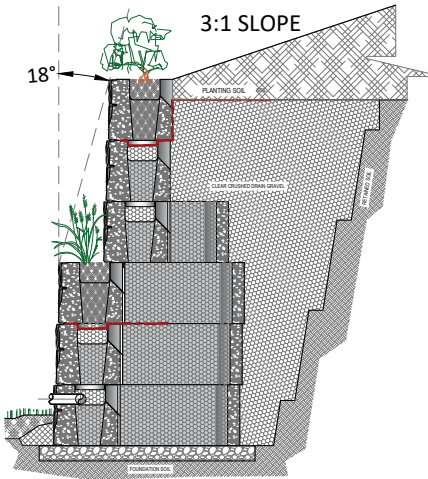
SOIL TYPE	HEIGHT EXPOSED	HEIGHT EMBEDDED	TOTAL
34° SOIL	9.4' [2865 mm]	0.6' [183 mm]	10' [3048 mm]
30° SOIL	5.5' [1676 mm]	0.5' [152 mm]	6' [1829 mm]
26° SOIL	N/A	N/A	N/A

DISCLAIMER: This chart is for initial estimation purposes only. Do not use for final design or construction. Retain a licensed professional engineer to design every wall on a case-by-case basis using site specific criteria. The accuracy and use of this document are the sole responsibility of the user. All calculations were performed based on NCMA methodology using factors of safety of 1.5 for sliding and overturning. The bearing capacity of base soils will be no less than 3,000 pounds per square foot (psf). All soils have been assumed to be less than 125 pounds per cubic foot (pcf). Global Stability Analysis has not been performed.

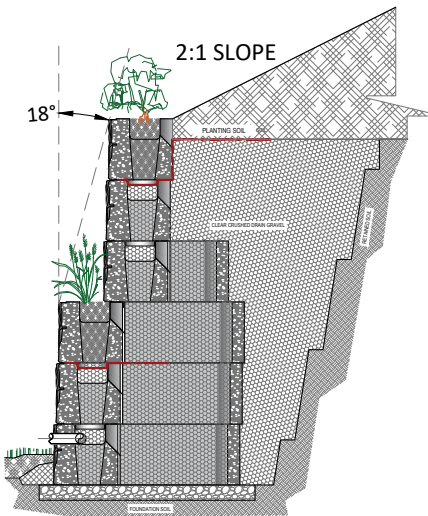
MAGNUMSTONE™ 18° SETBACK PLANTABLE WALL



SOIL TYPE	HEIGHT EXPOSED	HEIGHT EMBEDDED	TOTAL
34° SOIL	10.4' [3170 mm]	0.6' [183 mm]	11' [3353 mm]
30° SOIL	8.5' [2591 mm]	0.5' [152 mm]	9' [2743 mm]
26° SOIL	6.5' [1981 mm]	0.5' [152 mm]	7' [2134 mm]



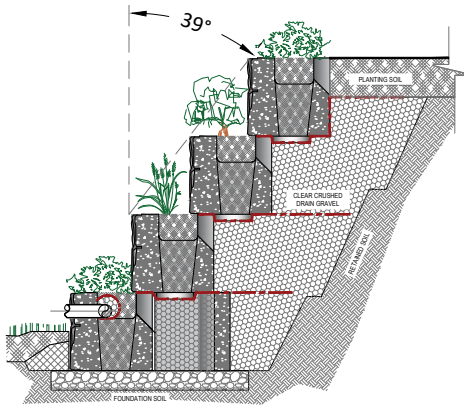
SOIL TYPE	HEIGHT EXPOSED	HEIGHT EMBEDDED	TOTAL
34° SOIL	8.5' [2591 mm]	0.5' [152 mm]	9' [2743 mm]
30° SOIL	N/A	N/A	N/A
26° SOIL	N/A	N/A	N/A



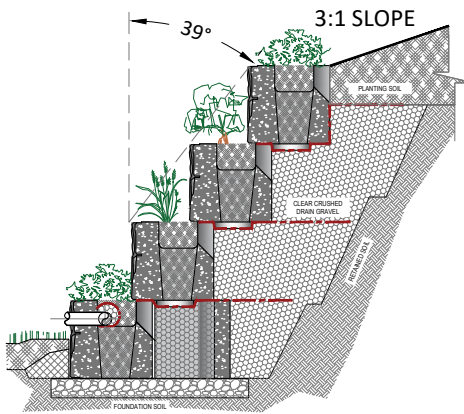
SOIL TYPE	HEIGHT EXPOSED	HEIGHT EMBEDDED	TOTAL
34° SOIL	6.5' [1981 mm]	0.5' [152 mm]	7' [2134 mm]
30° SOIL	N/A	N/A	N/A
26° SOIL	N/A	N/A	N/A

DISCLAIMER: This chart is for initial estimation purposes only. Do not use for final design or construction. Retain a licensed professional engineer to design every wall on a case-by-case basis using site specific criteria. The accuracy and use of this document are the sole responsibility of the user. All calculations were performed based on NCMA methodology using factors of safety of 1.5 for sliding and overturning. The bearing capacity of base soils will be no less than 3,000 pounds per square foot (psf). All soils have been assumed to be less than 125 pounds per cubic foot (pcf). Global Stability Analysis has not been performed.

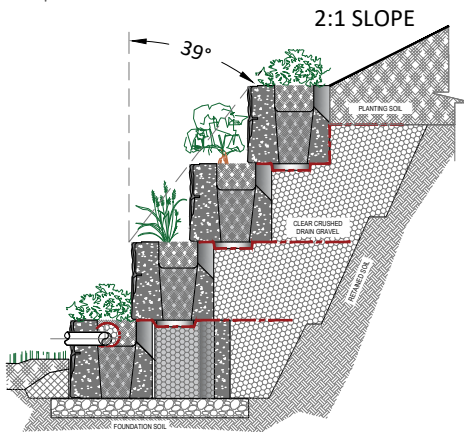
MAGNUMSTONE™ 39° SETBACK PLANTABLE WALL



SOIL TYPE	HEIGHT EXPOSED	HEIGHT EMBEDDED	TOTAL
34° SOIL	20.9' [6370 mm]	1.1' [335 mm]	22.0' [6706 mm]
30° SOIL	20.9' [6370 mm]	1.1' [335 mm]	22.0' [6706 mm]
26° SOIL	14.2' [4420 mm]	0.8' [244 mm]	15.0' [4572 mm]



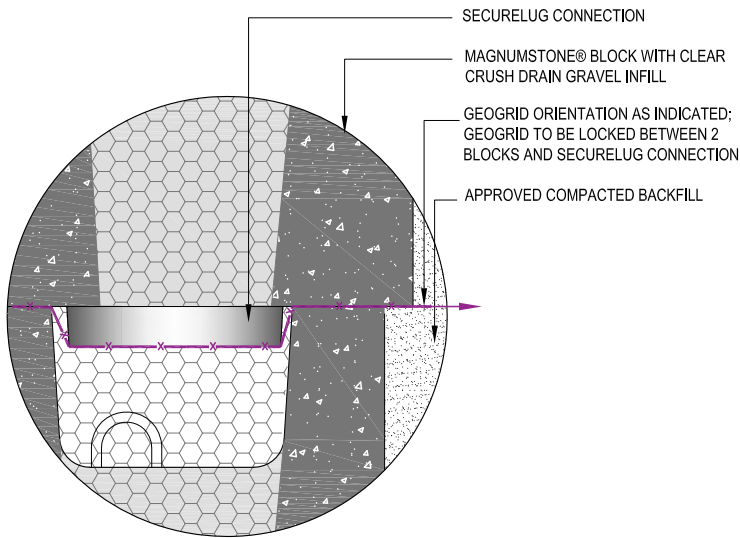
SOIL TYPE	HEIGHT EXPOSED	HEIGHT EMBEDDED	TOTAL
34° SOIL	20.9' [6370 mm]	1.1' [335 mm]	22.0' [6706 mm]
30° SOIL	17.0' [5182 mm]	1.0' [305 mm]	18.0' [5486 mm]
26° SOIL	10.4' [3170 mm]	0.6' [183mm]	11.0' [3353 mm]



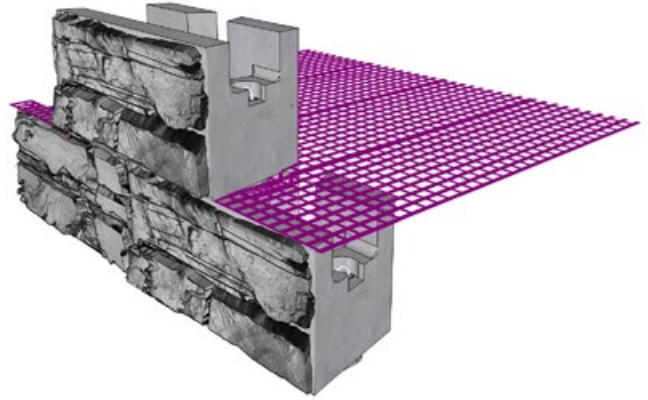
SOIL TYPE	HEIGHT EXPOSED	HEIGHT EMBEDDED	TOTAL
34° SOIL	20.9' [6370 mm]	1.1' [335 mm]	22.0' [6706 mm]
30° SOIL	13.2' [4023 mm]	0.8' [244 mm]	14.0' [4267 mm]
26° SOIL	N/A	N/A	N/A

DISCLAIMER: This chart is for initial estimation purposes only. Do not use for final design or construction. Retain a licensed professional engineer to design every wall on a case-by-case basis using site specific criteria. The accuracy and use of this document are the sole responsibility of the user. All calculations were performed based on NCMA methodology using factors of safety of 1.5 for sliding and overturning. The bearing capacity of base soils will be no less than 3,000 pounds per square foot (psf). All soils have been assumed to be less than 125 pounds per cubic foot (pcf). Global Stability Analysis has not been performed.

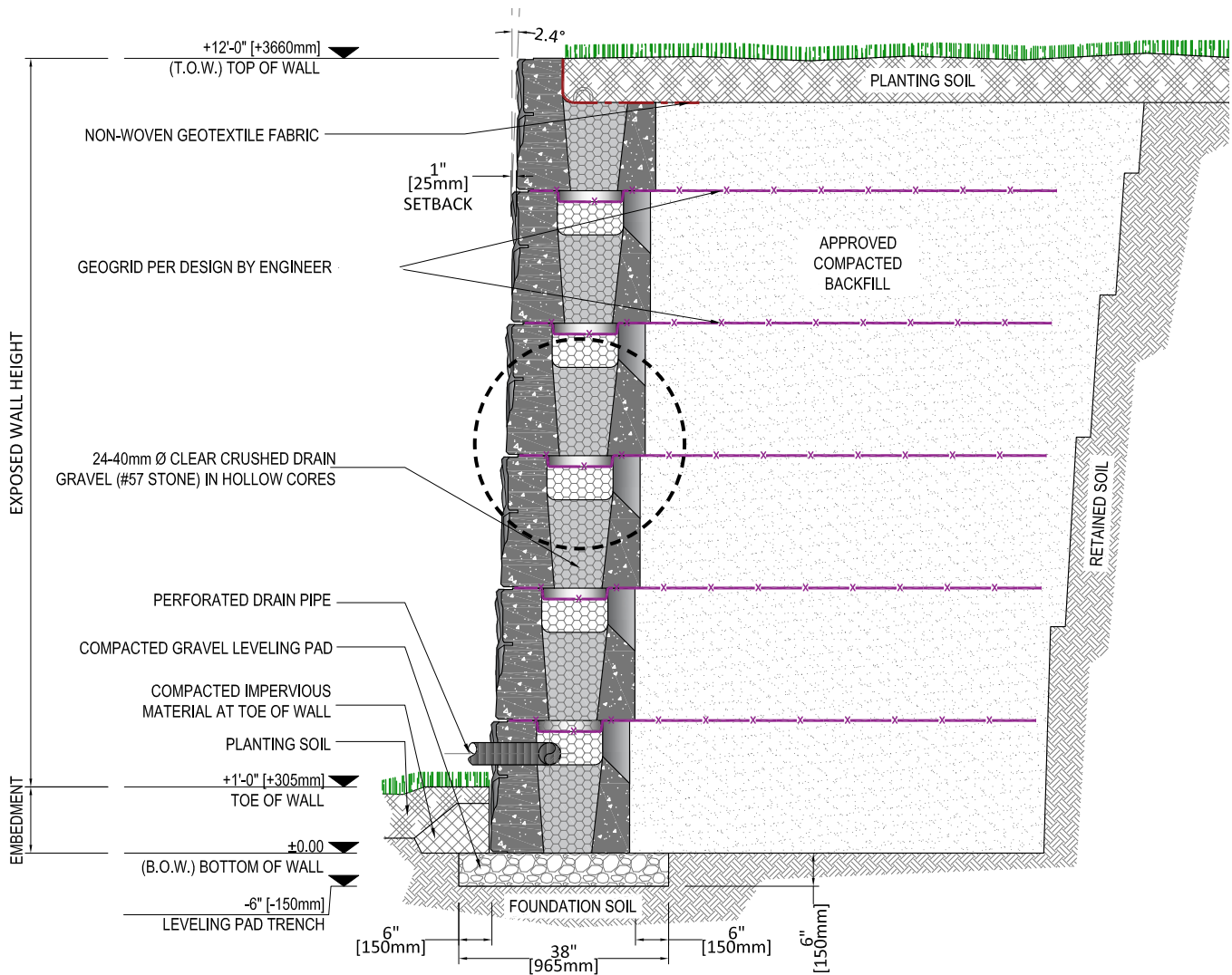
MAGNUMSTONE™ GEOGRID WALL



CONNECTION DETAIL

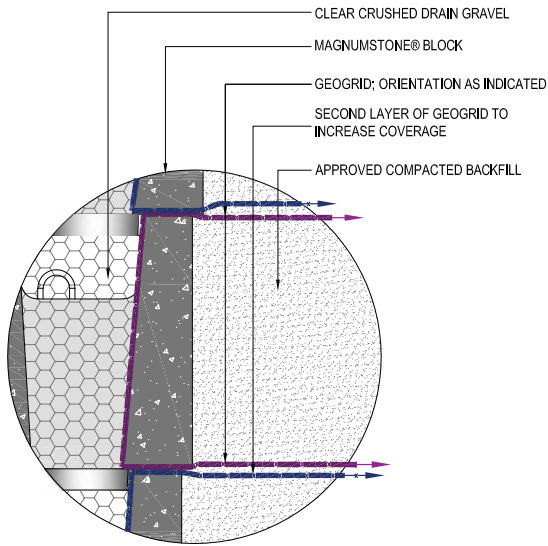


ISOMETRIC VIEW

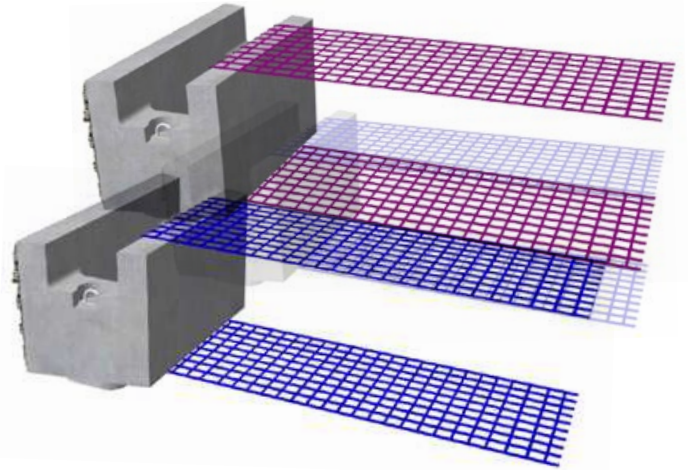


TYPICAL CROSS SECTION

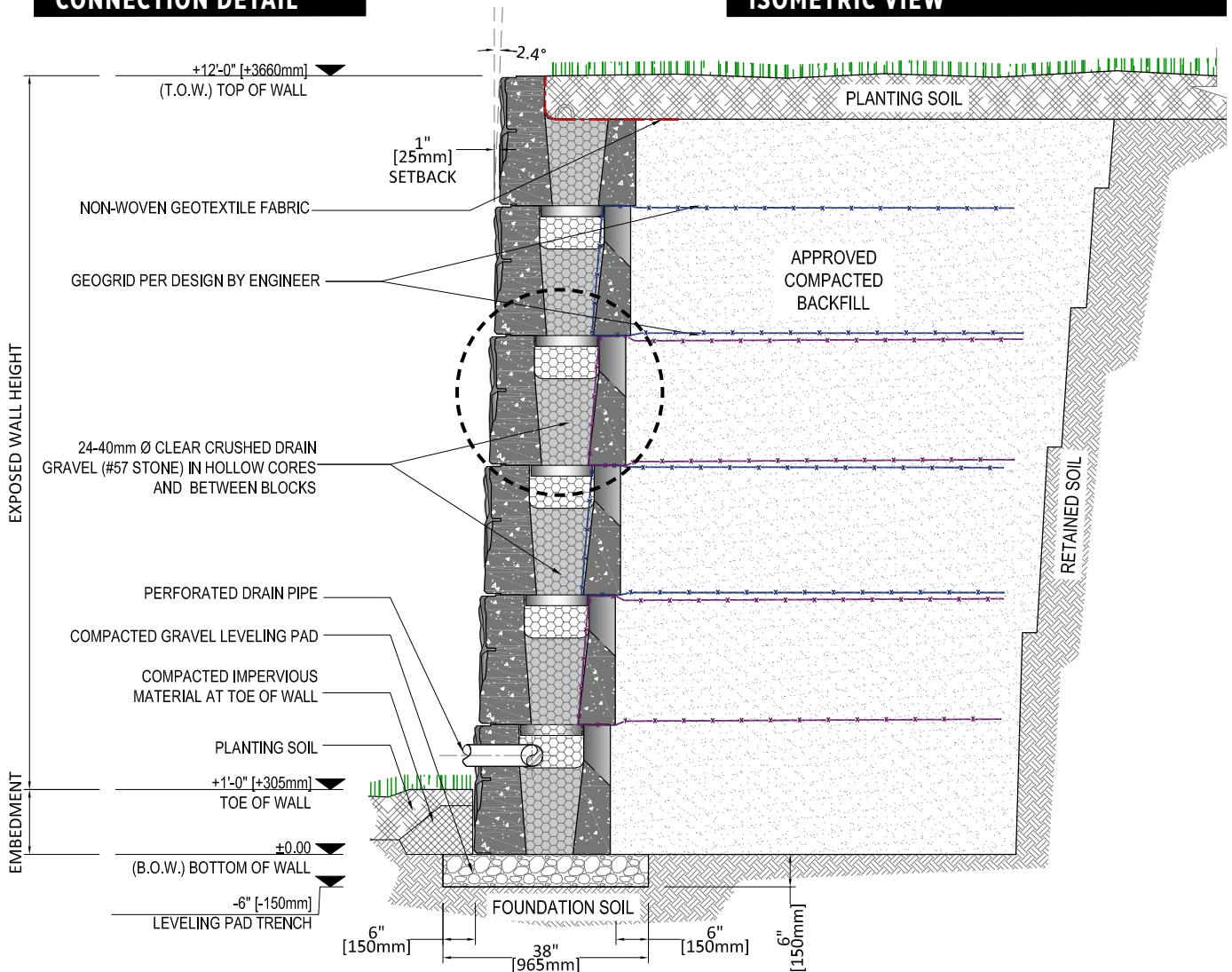
MAGNUMSTONE™ POSITIVE CONNECTION WALL



CONNECTION DETAIL

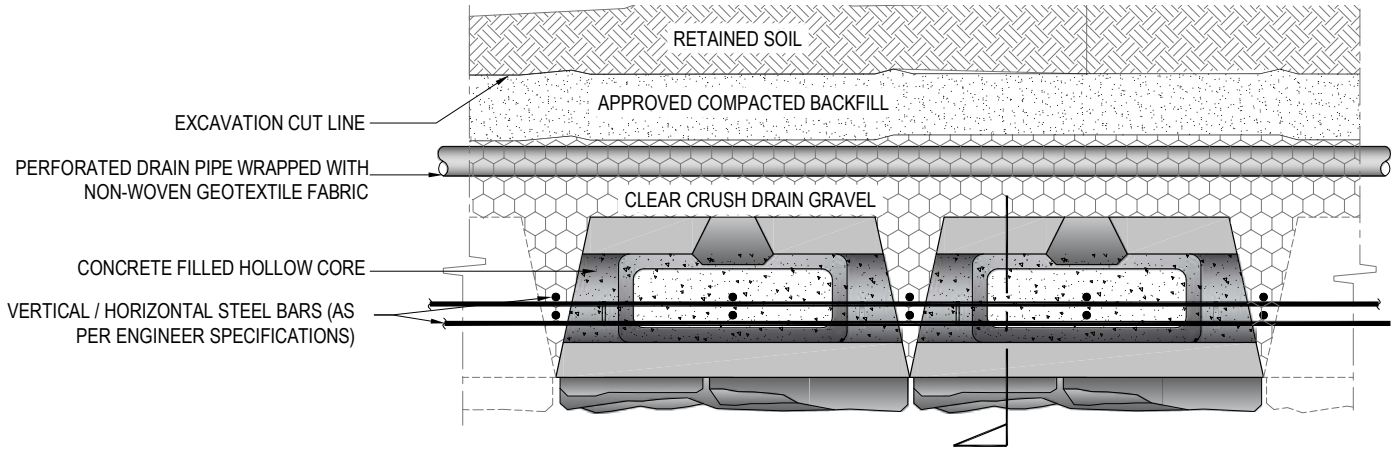


ISOMETRIC VIEW

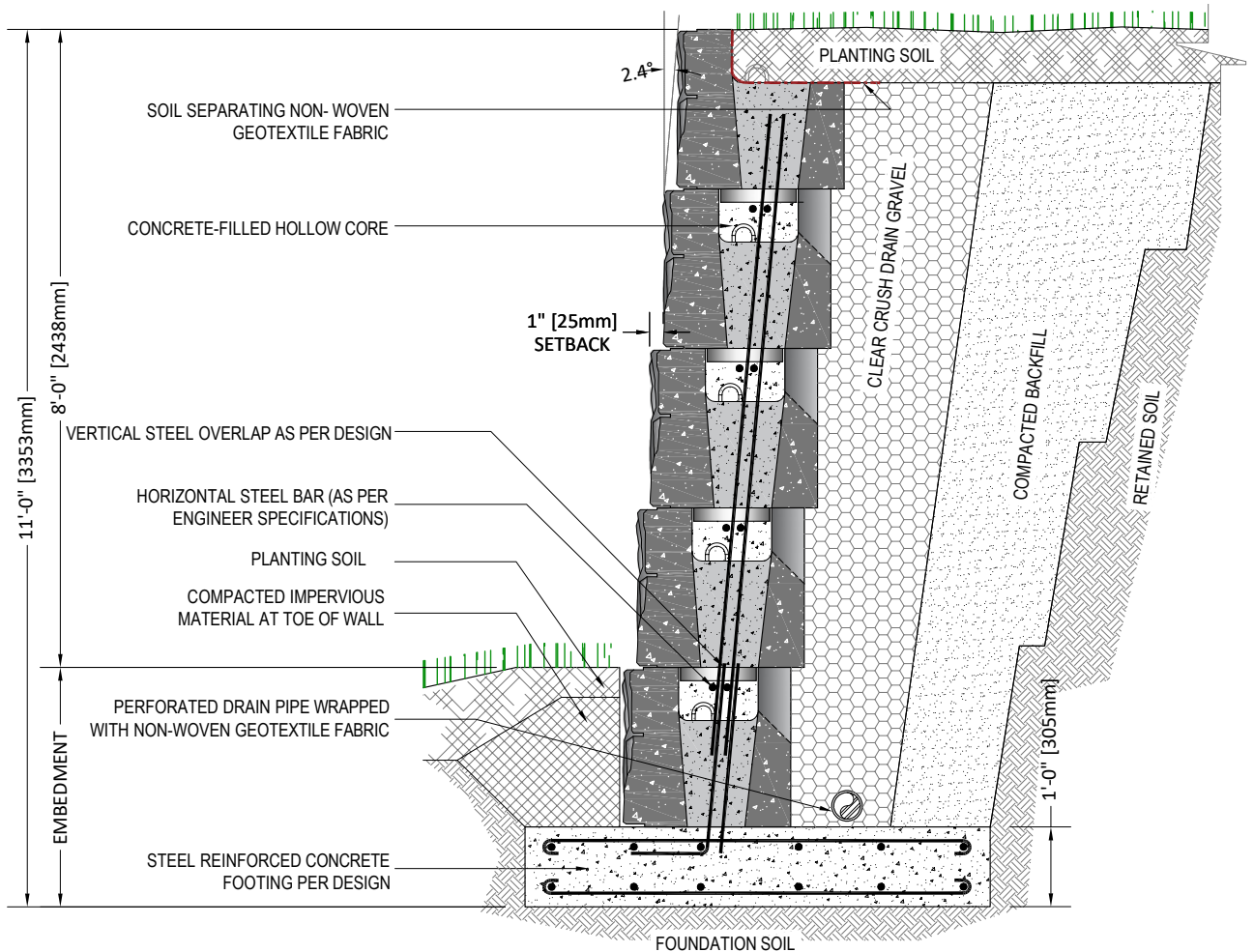


TYPICAL CROSS SECTION

MAGNUMSTONE™ CANTILEVERED WALL

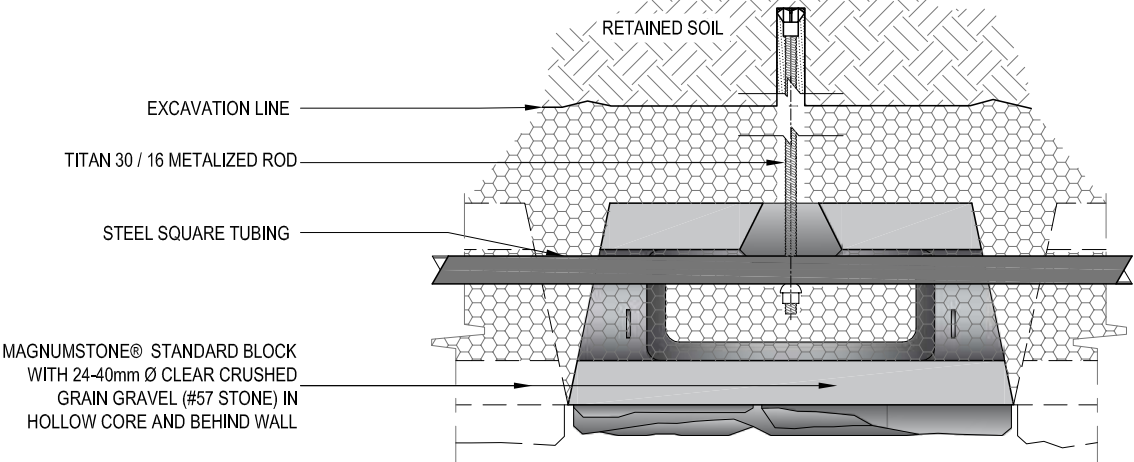


TOP VIEW

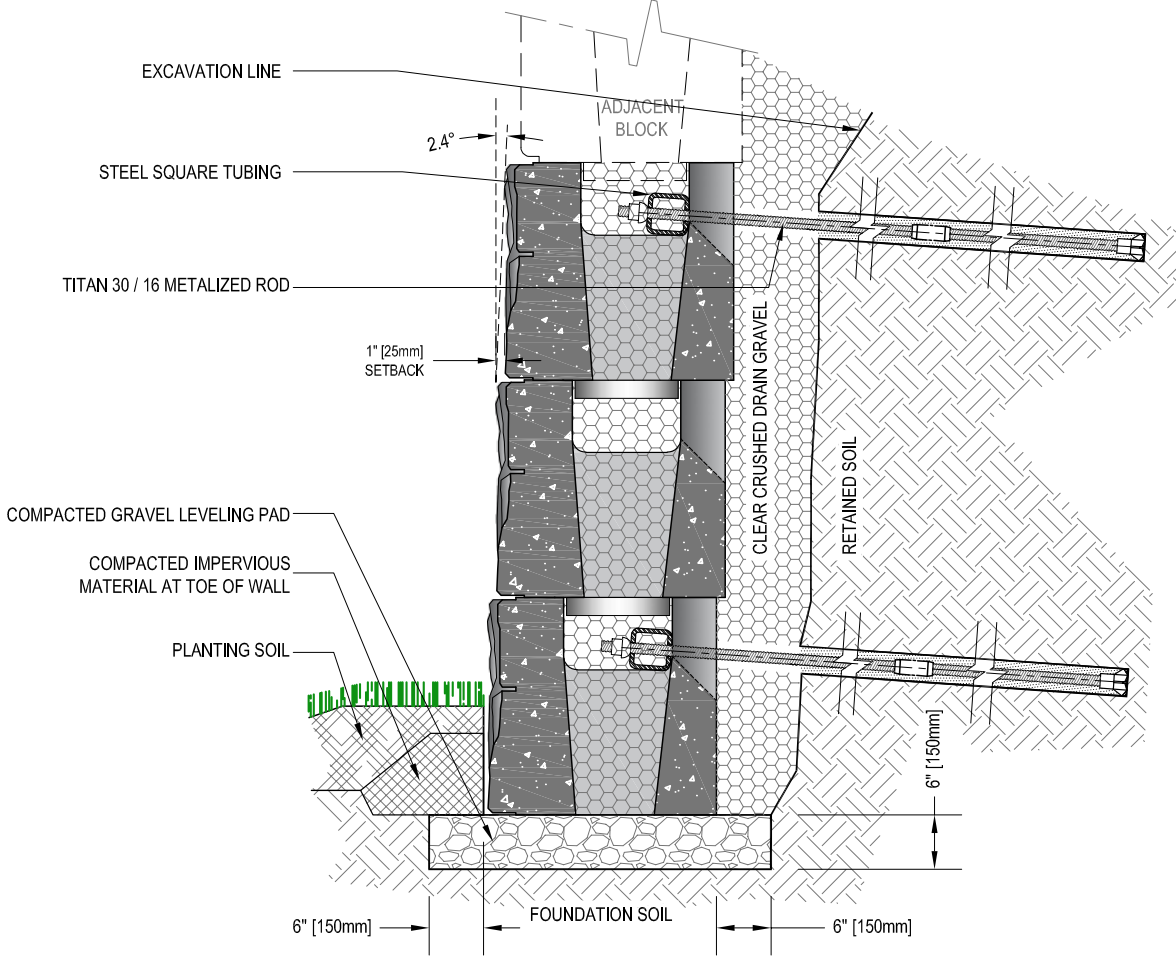


TYPICAL CROSS SECTION

MAGNUMSTONE™ SOIL NAILING

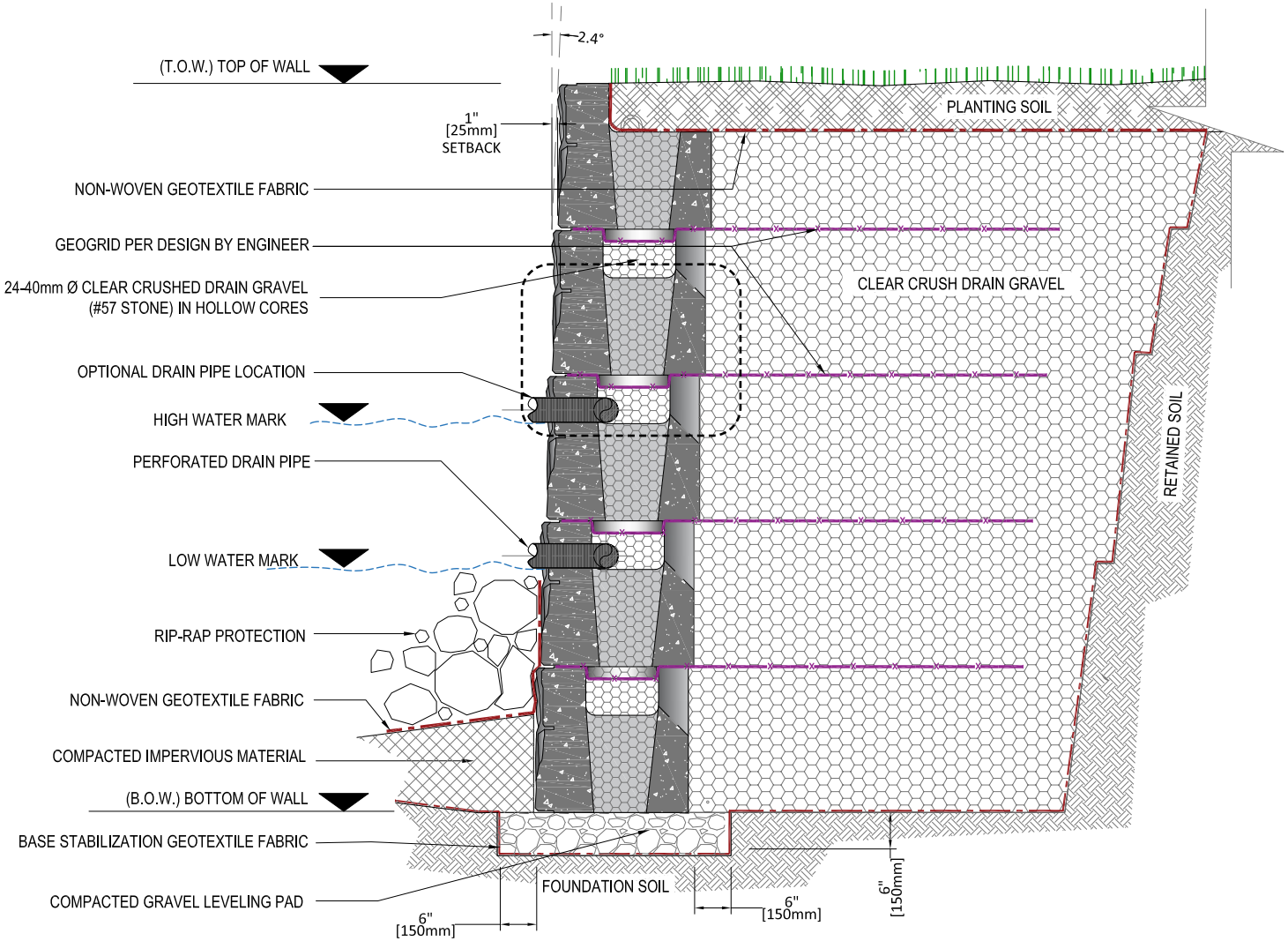
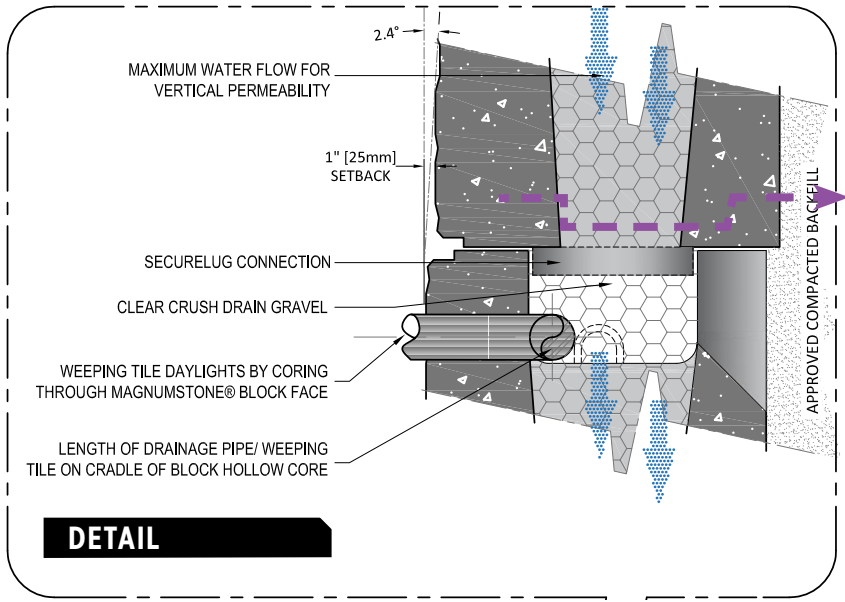


TOP VIEW

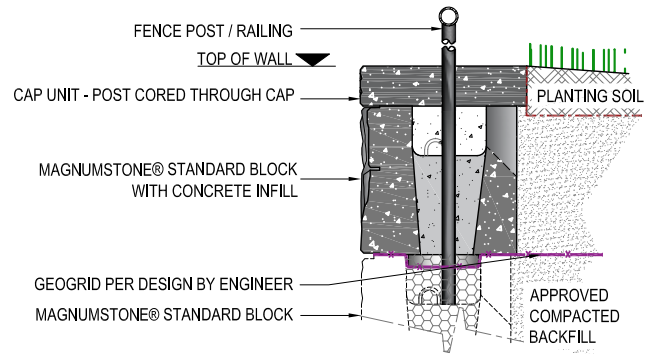
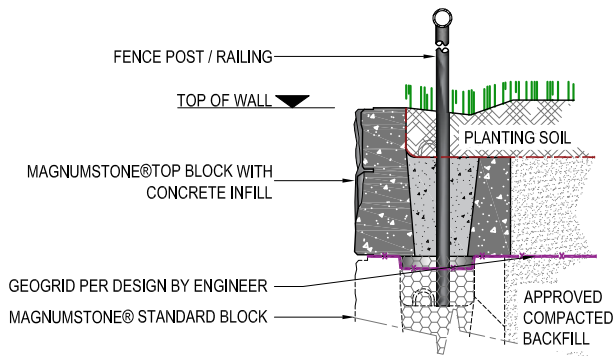


TYPICAL CROSS SECTION

MAGNUMSTONE™ WATER APPLICATION/DRAINAGE



MAGNUMSTONE™ FENCE OPTIONS

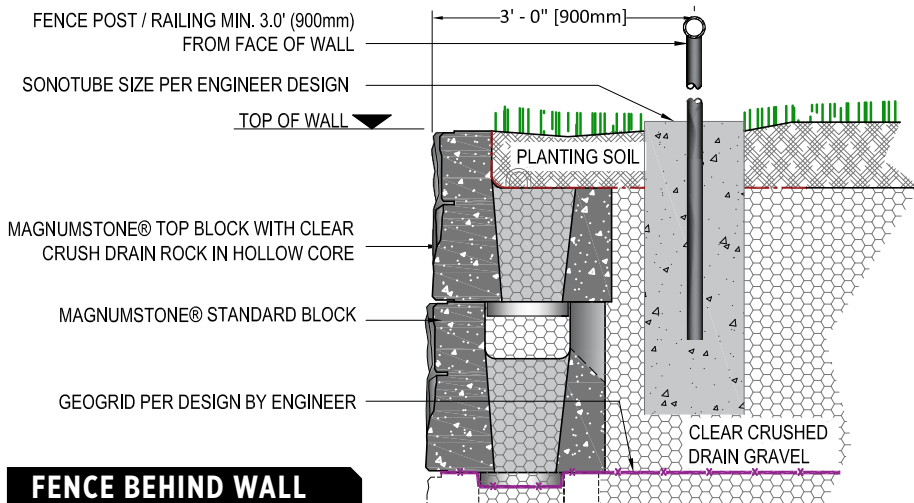


GENERAL NOTE:

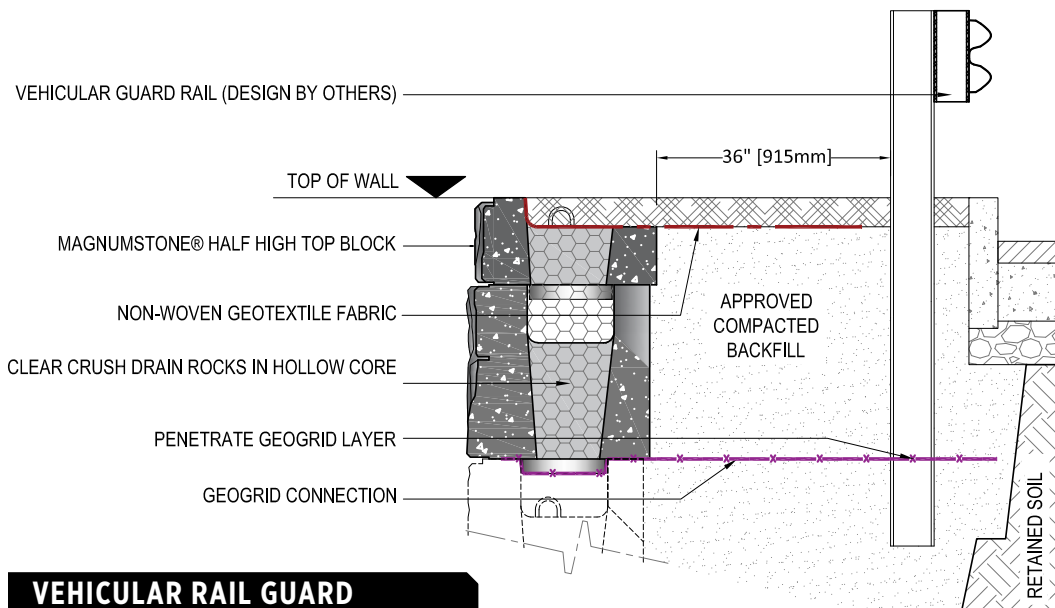
1. Fence post / railing design by others
2. Design to be performed by engineer

THROUGH HOLLOW CORE

THROUGH HOLLOW CORE WITH CAPPING

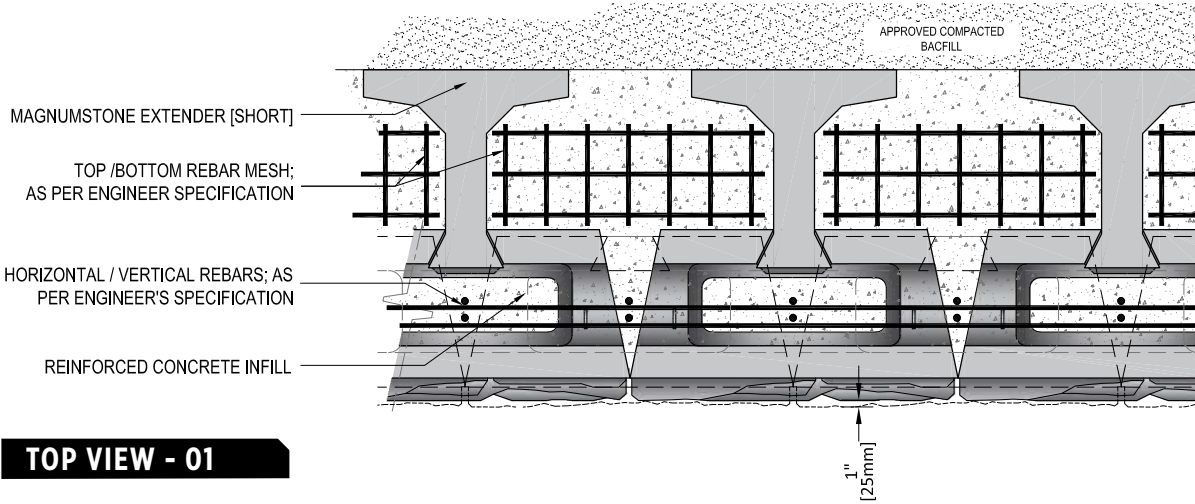


FENCE BEHIND WALL

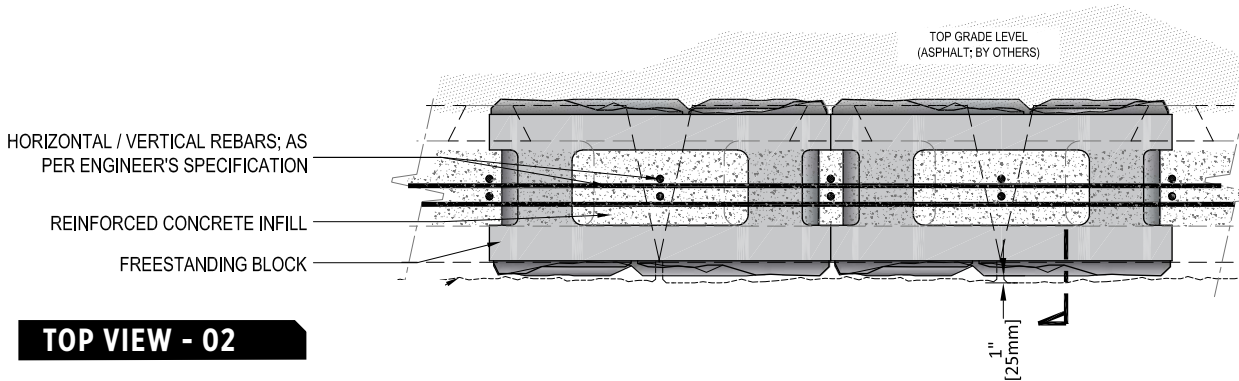


VEHICULAR RAIL GUARD

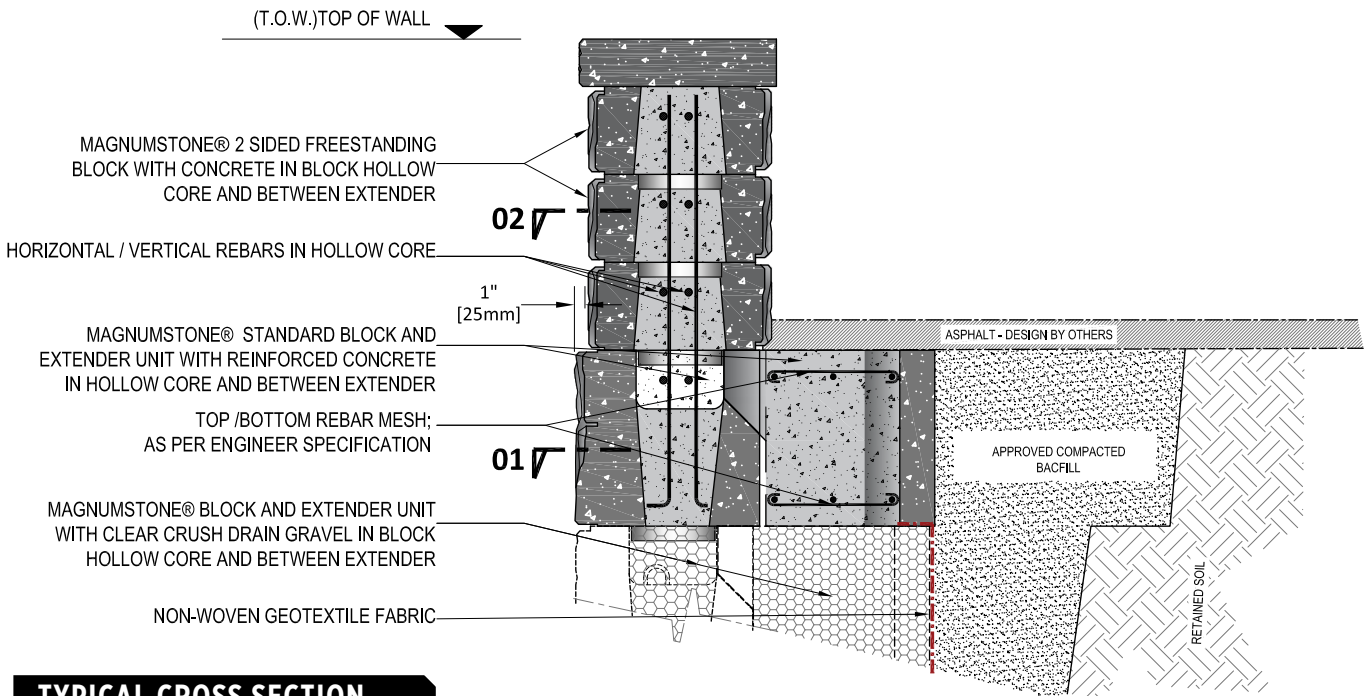
MAGNUMSTONE™ FREE STANDING PARAPET WALL



TOP VIEW - 01

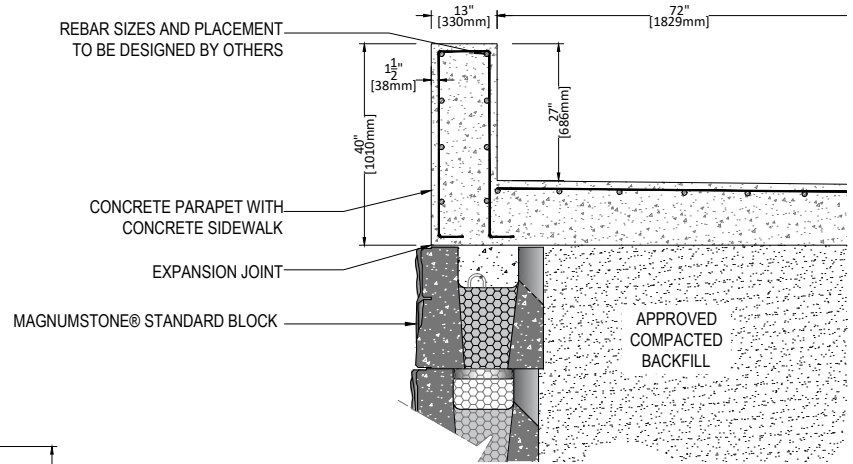


TOP VIEW - 02

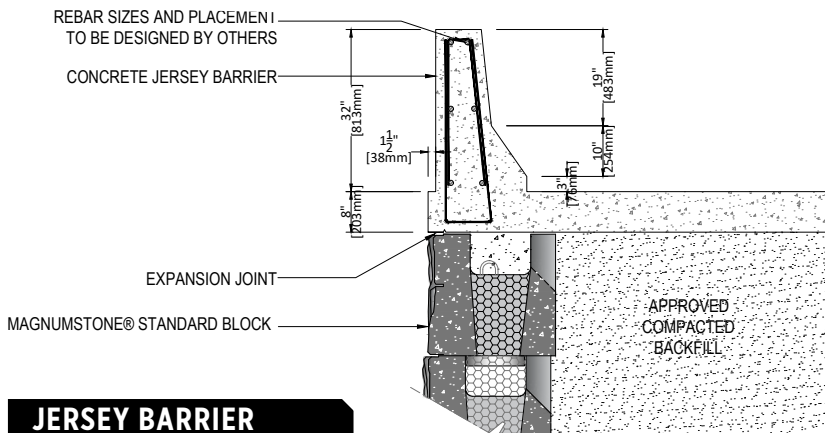


TYPICAL CROSS SECTION

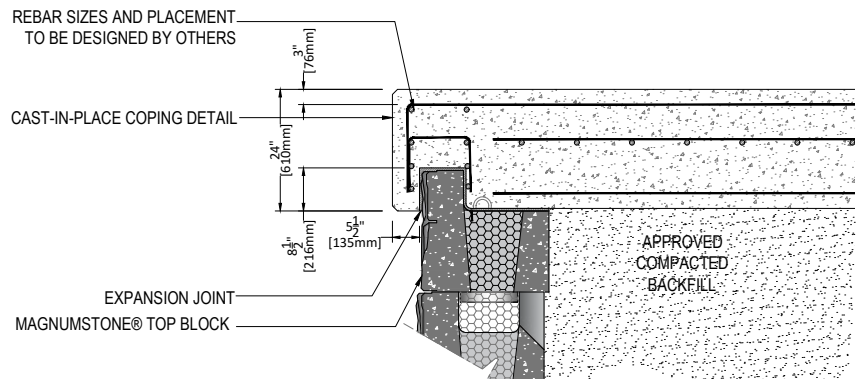
MAGNUMSTONE™ TOP OF WALL BARRIER OPTIONS



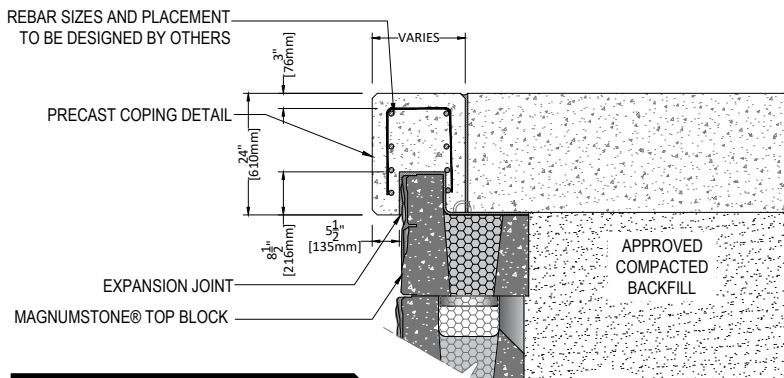
CONCRETE PARAPET



JERSEY BARRIER



CAST-IN-PLACE COPING



PRECAST COPING



MagnumStone®
RETAINING WALLS

Toll Free: 1-800-939-9193

Email: info@magnumstone.com

magnumstone.com

